

## Appendix A

### BRIDGEND COUNTY BOROUGH COUNCIL

#### CONSULTATION REPORT

#### REPORT OF THE CORPORATE DIRECTOR - EDUCATION AND FAMILY SUPPORT

#### SCHOOL MODERNISATION PROGRAMME: OUTCOME OF CONSULTATION ON THE PROPOSAL TO MAKE A REGULATED ALTERATION TO COETY PRIMARY SCHOOL, Ffordd Yr Hebog, Coity, Bridgend, CF35 6DH BY ENLARGING THE SCHOOL FROM 2-FORM-ENTRY TO 2.5-FORM-ENTRY, WITH EFFECT FROM THE SPRING TERM JANUARY 2025

#### 1. Purpose of report

- 1.1 This public report is to inform of the outcome of the consultation on the proposal to make a regulated alteration to enlarge Coety Primary School, Ffordd Yr Hebog, Coity, Bridgend CF35 6DH from a 2-form-entry to 2.5 form-entry (FE) school.

#### 2. Connection to corporate well-being objectives/other corporate priorities

- 2.1 This school modernisation programme assists in the achievement of the following corporate well-being objectives under the **Well-being of Future Generations (Wales) Act 2015**:
- **Supporting a successful sustainable economy** - taking steps to make the county borough a great place to do business, for people to live, work, study and visit, and to ensure that our schools are focused on raising the skills, qualifications and ambitions for all people in the county borough.
  - **Smarter use of resources** – ensure that all resources (financial, physical, ecological, human and technological) are used as effectively and efficiently as possible and support the creation of resources throughout the community that can help deliver the Council's well-being objectives.

#### 3. Consultation process

- 3.1 In order to progress the proposal, consultation exercises were carried out between 12 December 2022 and 25 January 2023 in accordance with the statutory School Organisation Code 2018. A copy of the consultation document was made available during this time on the Council's website:

<https://www.bridgend.gov.uk/my-council/consultations/coety-primary-school-consultation/>

3.2 The consultation document invited views and opinions to be submitted in respect of the proposal. A list of stakeholders consulted can be seen at Appendix 10.

#### **4. Summary of responses to consultation**

4.1 Key points from the consultation exercise were as follows, with full details appended at the end of this report. The local authority held two separate meetings in person with the School Council and school staff, and three “virtual” meetings with governors, Coity Higher Community Council and members of the community. Local members actively engaged and supported the process. Five representatives from BCBC attended the meetings. Welsh translation services were offered for each meeting.

#### **4.2 Governing body consultation**

A virtual ‘TEAMs’ consultation meeting was held with representatives from Coety Primary School on Tuesday 10 January 2023. Full details of the meeting discussions, responses and clarifications given are detailed in Appendix 1 of this consultation report.

School governors asked about the size of the school playground and the impact of having additional pupils in a small space. They noted the play area is very muddy. Officers explained that the proposed site layout has been designed to demonstrate that a four-classroom extension plus the required space for outdoor play can be accommodated at the site. There is currently a flat area of grass by the banking which provides the potential to extend the yard space to the foot of the bank and will create an additional net gain of 380m<sup>2</sup> of yard space. The local authority will aim to accommodate as much additional yard space as possible, within the area guidelines stipulated in Building Bulletin 99 Briefing Framework for Primary Schools.

Lunch sittings at Coety Primary School are currently staggered between 11:20am to 1:15pm. Governors were concerned that the existing hall space is not sufficient to accommodate the additional pupils and that the kitchen would be unable to facilitate all of the meals, taking into consideration the uptake of Universal Primary Free School Meals. All schools are designed as per Building Bulletin 99 area guidelines for schools. There is a hall and studio space in the school which falls within the area parameters for halls. Extending the hall will not resolve the situation of reducing the lunch service time, as pupils cannot all be served their meals at the kitchen hatch at the same time. There is a need for a continuous lunch time service. This will allow pupils to have their lunch on a rota system. The school will need a longer lunch period for the kitchen to cope with the additional UPFSM. Additional combi-ovens are being ordered for the kitchen which will be sufficient to meet the increased number of meals. Catering Services has indicated that there is potential to improve the meal service by providing an additional free-standing servery.

Continuous lunch service would be required with tables/seats being rotated as pupils leave the hall instead of sittings. The kitchen can batch cook foods throughout a continuous service to ensure the food is at optimal nutrition and quality. In addition, continuous service and rotation of pupils will speed up the service time. The Catering Services Manager will be consulted during the design development process.

The scheme is programmed to be delivered in January 2025. The Pupil Admission Number (PAN) for the school will be 75 and the full-time nursery provision will be 75. There will be an element of part-time provision to allow pupils aged two-to-three years to attend the school on a part-time basis. Children aged three-to-four years attending full-time nursery should be able to transfer into reception as the PAN aligns to the number of full-time nursery places. This proposal is aimed at improving the position of those children who currently are unable to transition from nursery into reception. However, the statutory school admissions process will apply, as per the School Admissions Code.

Governors noted that very few children who live in Coity are not able to secure a place at Coety Primary School as they are deemed out of catchment. Children from Parc Derwen cannot attend because the numbers are too high based on a circle drawn around the school. It was explained that the catchment area for the school extends to Coity village, the circle could refer to the travel distance and numbers applying for places could be based upon a first-come-first-served basis.

There is a potential opportunity to increase the size of the staffroom. It was explained that the staffroom is not big enough for the 42 members of staff currently at the school. Officers will align the size of the staffroom to meet the increase of staff numbers, in-line with Building Bulletin 99.

Throughout the design process, officers will consult and engage with all stakeholders to ensure that the four-classroom extension meets requirements.

#### **4.3 School Council / pupils consultation**

The School Council met at Coety Primary School with BCBC council representatives on Thursday 12 January 2023 to discuss the proposal. Prior to the meeting, the headteacher held a workshop with the children and asked about their views. The School Council was asked to consult with their fellow pupils to gather as many opinions on the proposal as possible. Approximately 300 pupils were asked for their advantages and disadvantages of the proposal and compiled their findings on post-it notes for discussion purposes. Full details of the meeting discussions and responses/clarifications given are detailed in Appendix 2 and 3 of this consultation report.

Pupils were presented with a child friendly version of the consultation document and asked about their views. They discussed their concerns regarding the playground space and asked if the new basketball/netball court would have an impact on the yard space. It was explained that the

basketball/netball court would be painted lines, which would not affect the yard space. The pupils were keen to have an area to play football, it was noted that additional lines could be added to the court for a football pitch.

They asked about the hall and kitchen area accommodating additional pupils. It was explained that the kitchen size is sufficient, but two additional ovens have been ordered, so that the catering staff can cater for the children.

The pupils wanted to know if the classrooms would be specific to certain year groups and whether they would need to re-organise the current classroom layout. Council representatives replied that some year groups would be mixed as there will be an additional 0.5-form-entry, (for example, there would be two year 6 classes and a year 5/6 class). It will be the headteachers decision on where the classes are located in the school.

The children were interested in what colour the exterior and interior would be painted and they asked if they would benefit from additional ICT resources. They expressed excitement at building new friendships and at the prospect of their neighbours being able to attend the same school as them.

#### **4.4 Staff consultation**

A consultation meeting was held at Coety Primary School with the staff on Thursday 12 January 2023. Full details of the meeting discussions and responses/clarifications given are detailed in Appendix 4 of this consultation report.

Council representatives explained that officers will work with the school to ensure the yard space works and will be consulting formally with staff in the future regarding design requirements, if approval for this scheme is received from Cabinet. Officers will also explore options for safe access to the 4G pitch. The current hall space is designed to area guidelines as set-out in Building Bulletin 99. The possibility and options to increase the size of the staffroom will be explored and the area requirement will be informed by the Building Bulletin

#### **4.5 Coety Higher Community Council consultation**

A 'virtual' TEAMS consultation meeting was held with Coety Higher Community Council on Thursday 12 January 2023. Full details of the meeting discussions and responses / clarifications given are detailed in Appendix 5 of this consultation report.

Council representatives explained that a set of options was explored to maximise the capacity at Coety Primary School. A four-classroom extension was deemed the preferred option for the school. The overall comments from councillors were that the school is not big enough to accommodate the additional pupils and that a four-classroom extension will not fit the needs of the school in the future.

Concerns were raised that this project does not address the requirements of the Future Generations (Wales) Act 2015 and the long-term needs of the pupils could not be met. The school yard is not big enough and neither is the hall to allow for effective lunch service. It was noted that the staff room is not large enough and will not be able to accommodate additional staff members.

#### **4.6 Open consultation event**

A virtual 'Teams' call consultation meeting was held on Monday 16 January 2023. Full details of the meeting discussions, responses and clarifications given are detailed in Appendix 6 of this consultation report. Approximately 25 guests attended the meeting.

Questions were raised regarding the size of staff room, hall and yard space. There is an increasing need for additional capacity at Coety Primary School, as the projection figures in the consultation document show. Officers were asked if there would be any capacity at the school site for future expansion. Officers explained that this four-classroom extension is the only opportunity to expand the school, the school site is not big enough to make the school any larger in future. The option of a three-storey building was queried, and it was explained that the structure of Coety Primary School would not be able to support a third floor.

Local residents queried if there would be further consultations if any changes are made to the proposed plans. This scheme is subject to planning permission and there will be a further consultation process in this regard. It was suggested that trees could be planted to limit the visual impact of the school on nearby homes.

It was noted that the school will require additional school governors. The school's governing body will determine future staffing requirements.

There are a high number of pupils who live locally who are unable to attend Coety Primary School, including siblings and next-door neighbours. It was asked if a pupil admission number of 75 would be enough. Officers explained that the pupil admission number for the school will be 75 and full-time nursery provision will be 75. There will be an element of part-time provision to allow pupils aged two-to-three years to attend the school on a part-time basis. Children aged three-to-four years attending full-time nursery should be able to transfer into reception as the PAN aligns to the number of full-time nursery places. This proposal is aimed at improving the position of those children who currently are unable to transition from nursery into reception. However, the statutory school admissions process will apply, as per the School Admissions Code.

#### **4.7 Summary of written representations**

Five items of direct correspondence were received during the consultation period. One piece of correspondence was received via Facebook. See Appendix 7 of this consultation report for details and responses/clarifications.

4.8 Responses were sent to the originators of items of correspondence thanking them for their submissions and stating that their comments would be taken into consideration.

#### 4.9 **Summary of online survey responses**

Overall, 45 respondents completed the online questionnaire. In respect of the question on whether they support the proposal, 20 responded 'Yes' and 25 responded 'No'. See Appendix 8 of this consultation report for details and the local authority's responses/clarifications in respect of issues raised.

### 5. **The view of Estyn, her Majesty's Inspectors of Education and Training in Wales**

5.1 Estyn has considered the educational aspects of the proposal, as detailed in Appendix 9 of this consultation report). Estyn has concluded as follows:

"Estyn considers that the proposal is likely to, at least, maintain the standard of provision in the area

### 6 **Impact Assessments**

6.1 An Equality Impact Assessment has been carried out as part of the consultation stage and was published as an appendix to the consultation document. The assessment concluded that the proposal is likely to have a negative impact on opportunities for people to use the Welsh language and is unlikely to impact disproportionately on any other protected group. Having reviewed responses to the consultation, the conclusion remains valid.

6.2 A Welsh Impact Assessment has been carried out as part of the consultation stage and was published as an appendix of the consultation document. It concluded that this proposal is likely to have a negative impact on opportunities for people to use the Welsh language as the proposal creates additional English-medium places in the catchment area. Parents of pupils in this area who might currently be considering a Welsh-medium education due to some of the difficulties in securing a place for their child at Coety Primary School due to the oversubscription at the school, may no longer consider this. This is because the chance of them securing a school place increases as the PAN is proposed to increase from 60-75 meaning an additional 15 places in each year group. However, evidence of previous refusals for admission indicate that this risk is low, as only one child chose a Welsh-medium education as a result of not being able to obtain a place at the school. The proposal aims to increase participation in the Welsh language by offering the opportunity to parents/carers and other members of the community to attend Welsh classes and/or other opportunities for community engagement through the medium of Welsh. In addition, they will be encouraged to signpost parents/carers to Welsh language classes. The school's facilities could be used for Welsh language activities that will increase participation, thereby increasing Welsh language opportunities and supports the local authority's

Welsh in Education Strategic Plan (WESP) and Welsh Government's Cymraeg 2050 agenda.

- 6.3 A Community Impact Assessment has been carried out as part of the consultation stage and was published as an appendix of the consultation document. The four-classroom extension will be located at the existing Coety Primary School site. It is therefore not anticipated to be significant potential for there to be negative impact on the community. Additional classroom space will be provided for pupils in the local catchment area. The extension will be fully accessible and compliant with the Equalities Act 2010.

## **7. Conclusion**

Following the consultation process, the local authority has revisited the proposal to determine the likely impact on the promotion of the Welsh language, quality and standards in education, the community and the school yard, hall and kitchen facilities.

### **7.1 Promotion of the Welsh language**

The proposed enlargement of Coety Primary School is planned for delivery during the first phase of the 10-year WESP (which sets out the local authority's strategy to promote and provide additional Welsh-medium education places in key geographical locations within the county borough).

As detailed in the Welsh Impact Assessment, this proposal creates additional English-medium provision within the school's catchment area and the parents of pupils in this area who might currently be considering a Welsh-medium education due to some of the difficulties in securing a place for their child at Coety Primary School due to the oversubscription at the school, may no longer consider this. The local authority recognises this as a risk to increasing Welsh-language provision in the county borough.

### **7.2 Quality and standards**

The proposal will deliver a first-class teaching and learning environment. The four-classroom extension would be designed to meet the needs of school staff and pupils. Estyn's view is that the proposal is likely to, at least, maintain the standard of education provision in the area.

### **7.3 Community**

A Community Impact Assessment was undertaken as part of the consultation process and has subsequently been reviewed.

The proposal would create a two-storey, four-classroom extension. The school is operating at capacity and with additional housing being constructed within the immediate and surrounding areas, a long-term solution is required to ensure that pupils can attend the school.

The school is designed with community use in mind and has facilities that could be used by Welsh language groups, the Urdd and sport organisations.

The proposal is part of a wider strategy to increase pupil places to serve the Bridgend northeast area which has been subject to this significant development. The Council has adopted a phased approach to expanding primary provision. The outcome will necessitate a catchment area review. Therefore, any proposed changes to school catchment areas can only be progressed in line with a decision regarding the education options for the residual YG Bro Ogwr site. The views stakeholders would be sought in respect of any proposed changes.

#### 7.4 School facilities

The four-classroom extension will be designed to Building Bulletin 99 Briefing Framework for Primary Schools. The project team would work closely with stakeholders to determine their needs and requirements, and the local authority will align the size of the staffroom to meet the increased number of staff, in-line with Building Bulletin 99. The local authority will aim to accommodate as much additional yard space as possible, and within the area guidelines stipulated in Building Bulletin 99.

### 8. Statutory process in determining proposals

8.1 The following table sets out the provisional timetable:

Activity	Date
Consultation period where we welcome your views and observations on the proposal*.	12 December 2022 to 25 January 2023
Draft Consultation Report to cabinet on the outcomes of the consultation.	11 April 2023
Publish Approved Consultation Report on BCBC website, hard copies available on request.	19 April 2023
If agreed by the cabinet of Bridgend County Borough Council, a Public Notice will be published and there will be a period of 28 days in which to submit any objections to the proposal in writing.	9 May 2023
If there are no objections cabinet can decide whether to proceed or not. If there are any objections, an Objections Report will be forwarded to cabinet for their consideration and subsequent determination. The approved report will then be published on the	July 2023



Activity	Date
BCBC website and hard copies of the report will be made available upon request. Publication of the decision notice.	
Implementation.	January 2025

Alternative formats of this report are available on request. You are welcome to communicate with us in Welsh and this document is available in Welsh.

**Contact Officer:** Education and Family Support Directorate (Directorate Support Unit)

**Telephone:** (01656) 643643

**E-mail:** [edsu@bridgend.gov.uk](mailto:edsu@bridgend.gov.uk)

**Postal Address** Bridgend County Borough Council  
 Civic Offices  
 Angel Street  
 Bridgend,  
 CF31 4WB

## APPENDIX 1



### Coety Primary School Consultation Meeting with Governing Body Tuesday 10 January 2023 at 5:30pm

Present: BCBC staff x 5  
Headteacher of Coety Primary School  
Coety Primary School Governing Body

The Head of Education and Family Support Directorate introduced the consultation session and set out the purpose of the meeting, nature and process of the consultation and outlined the proposal. The team from Bridgend County Borough Council introduced themselves. The Strategic Resources and Planning Officer provided an overview of the proposal with a PowerPoint presentation. The Principal Architectural Assistant presented the draft plans and site layout.

<u>Questions/Issues</u>	<u>Answer/Comments</u>
<p>Will the grassed bank at the edge of the yard space be kept where it currently is, or will it be pushed further back?</p> <p>I am glad to see that there will be further plans for consultation on the matter.</p>	<p>XX explained that there is an area of grass which provides the potential to extend the yard space to the foot of the bank and will create an additional net gain of 380m<sup>2</sup> of yard space. The local authority will aim to accommodate as much additional yard space as possible, within the area guidelines stipulated in Building Bulletin 99 Briefing Framework for Primary Schools.</p> <p>XX explained that the yard space could be expanded if needed. XX expressed that the site layout has been designed to demonstrate that a four-classroom extension plus the required space for outdoor play can be accommodated at the site. There will be greater collaboration and consultation with the school and stakeholders if the project progresses.</p>
<p>The existing hall space is not sufficient to accommodate an additional pupils. Lunch sittings are currently staggered between 11:20am to 1:15pm.</p>	<p>XX explained here is a hall and studio space in the school and an increase of 0.5-form-entry falls within the parameters for hall space as set out in the Building Bulletin.</p> <p>XX has met with the Catering Services Manager and as a result of the Universal</p>

<p>How will the kitchen be able to facilitate all of the meals, taking into consideration the uptake of universal free school meals?</p> <p>The hall space at Pencoed Primary School is the same size and it is not big enough to accommodate their pupils at lunch time and pupils are having to eat their packed lunch in the classrooms.</p>	<p>Primary Free School Meals rollout, an additional two combi-ovens have been ordered. Catering Services has advised that this will be sufficient to accommodate the increased pupil population.</p> <p>XX added that the council can pass on specific information from Pencoed Primary School in due course.</p>
<p>The proposal is “not concrete”, when will we see the final proposed design? Will the consultation be completed before we see the final plans?</p> <p>What is the size of play yard at Pencoed Primary School, in comparison to what we have at Coety?</p>	<p>XX explained that there must be a consultation process for the proposal. There will be continued engagement with the school when in terms of design options and there can be additional consultations events in terms of design, as appropriate.</p> <p>XX commented that there has been work completed for this stage of the proposal.</p> <p>XX answered saying we do not know the exact size measurements, but we can find out and compare the values.</p>
<p>Why is the extension set to be opened in January? It was noted that it is in the middle of the academic year. Would new pupils and teachers not be able to join, or would it be difficult to attract new pupils or teachers at that time of year?</p> <p>Is there a guarantee that the new nursery places awarded would continue into reception?</p>	<p>XX explained that to successfully deliver this project, the programme is aimed at January 2025. The recruitment for more staff would be determined at a later stage</p> <p>The pupil admission number (PAN) for the school will be 75 and full-time nursery provision will be 75. There will be an element of part-time provision to allow pupils aged two-to-three years to attend the school on a part-time basis. Children aged three-to-four years attending full-time nursery should be able to transfer into</p>

<p>Children who live in Coity are not able to secure a place at Coety Primary School as they are deemed out of catchment. Children from Parc Derwen cannot attend because the numbers are too high based on a circle drawn around the school.</p>	<p>reception as the PAN aligns to the number of full-time nursery places. This proposal is aimed at improving the position of those children who currently are unable to transition from nursery into reception. However, the statutory school admissions process will apply, as per the School Admissions Code.</p> <p>XX explained that the catchment area includes Coity village. The circle could refer to the travel distance and numbers applying for places could be based upon a first-come-first-served basis. The catchment area will be under review.</p> <p>XX added that the statutory school admissions process will apply, as per the School Admissions Code.</p>
<p>The current staff room is not large enough for the existing 42 members of staff. How do you propose to increase the size of the staffroom?</p> <p>What if the proposal goes ahead but not the extension to the staff room?</p>	<p>XX explained that the staff room could be extended, if it is determined that it would be necessary, it will be explored and consulted with the schools.</p> <p>XX answered that officers will align the size of the staffroom to meet the increase of staff numbers, in-line with the area guideline in Building Bulletin 99.</p>
<p>The elected member, Group Leader for Bridgend County Councillor Independents and Chair of Governors shared a list of comments and issues and will send a copy by email. Below is a summary of the comments.</p> <p>I am disappointed in the suggested proposal and the consultation report.</p> <p>A suitability report regarding the school yard was conducted a number of years ago. The results concluded that it was not large enough for current the pupil population. The council are in breach of the Well-being of Future Generations (Wales) Act 2015 due to the council's ignorance to the long-term needs of the pupils of the schools.</p>	<p>XX thanked XX for the comments and observations. XX reminded the group that this is the consultation stage and all designs and decisions made at this point are not the final option for the project.</p>

Instead of an extension, would it be feasible to add mobile classrooms to the site?

The current staffroom is not large enough and staff have to stagger their break times. This is a breach of the Well-being of Future Generations (Wales) Act 2015 as there would be a negative impact on the quality of teaching.

The main hall in the school will not be large enough to accommodate the additional capacity. With the addition of the Universal Primary Free School Meals programme, it has first been implemented in the foundation phase with 83.3% of pupils now receiving school meals. The current hall setup is already under pressure from this programme. Lunch times are spread over a period of two and a half hours. Would this need to be extended further?

A 2.5-form-entry school is not large enough and does not address the expansion of Parc Derwen. The school site is too small.

Persimmon has offered the council additional space at the front of the school, why has it not been utilised?

YG Bro Ogwr (the nearest Welsh-medium school) is under capacity and has been on a falling roll since 2018. It feels as if the local authority is pushing children out of English-medium education and into Welsh-medium education. The school needs to become a 3-form-entry school to be able to cope with the demands of the new extension at Parc Derwen.

Approximately 30 pupils per year are refused nursery places within catchment and that this will only get worse.

There are missing aspects in the consultation documents provided and it is a disappointment to see the council produce such work. I am prepared to call-in the report at the Cabinet meeting and to seek

The local authority has not been approached for this offer / opportunity.

Officers will provide a response by email to the comments raised.

and fund a judicial review if a decision is made for this scheme to go ahead.	
The headteacher thanked governors and officers for their presentation and time.	The Head of Education and Early Help closed and thanked all participants for attending. Further questions can be emailed to the Strategic Resources and Planning Officer.

## APPENDIX 2



**Coety Primary School Consultation**  
**School Council (pupils)**  
**Thursday 12 January 2023 at 2:45pm**

Present: BCBC staff x 5  
Headteacher of Coety Primary School  
Coety Primary School Council

The Schools Programme Manager introduced the consultation session, the project team introduced themselves. The School Council introduced themselves. The Strategic Resources and Planning Officer presented the proposal to the group through a PowerPoint presentation. The Principal Architectural Assistant presented the draft plans and site layout.

Prior to the meeting, the headteacher held a workshop with the children and asked about their views on the proposal. The School Council were asked to consult with their fellow pupils to gather as many opinions on the proposal as possible. Approximately 300 pupils were asked for their advantages and disadvantages of the proposal and compiled their findings on post-it notes for discussion. Full details of the responses are included below.

<b><u>Questions/Issues</u></b>	<b><u>Answer/Comments</u></b>
Will we need a larger hall?	XX answered saying that schools are designed as per Building Bulletin 99 area guidelines for schools. There is a hall and studio space in the school and an increase of 0.5-form-entry does not require area, as the area falls within the parameters for hall space. The Catering Services Manager will be consulted during the design development process.

<p>Will the netball/basketball court on the yard affect how we play at break and lunch time?</p> <p>We would like a football pitch. We have to play football on the yard.</p>	<p>XX explained that games courts will be painted on the yard , which will allow for different games like basketball, netball and football</p>
<p>Will the new classrooms be specific to a designated year group, or a mixed class?</p>	<p>XX There will be an extra half a form of entry, meaning there will be one split class (for example, two year 6 classes and a mixed year 5 and 6 class), but the number of pupils in each class will total to 30 pupils.</p>
<p>Will we have to move the classes down? (Re-arrange the current location of the classrooms within the school)</p>	<p>XX explained that there will be changes to the layout of the classrooms, this will be for your headteacher to determine.</p>
<p>Will we need more dinner ladies?</p>	<p>XX said that we might need more lunch time assistants. The size of the kitchen is sufficient, but the Catering Services Manager has determined that two larger combi-ovens are required to accommodate the additional pupils. The Catering Services Manager will need to determine if additional kitchen staff are required in the future.</p>
<p>Will the budget include ICT equipment and furnishings for the classrooms?</p>	<p>XX explained that we will have a budget for resources, which includes furniture and ICT equipment.</p>
<p>What colour will the new extension be on the outside?</p> <p>Year one would like the building to be vibrant with bright colours like yellow.</p> <p>The children are excited to meet new pupils and make new friends.</p>	<p>XX and XX both explained that the brickwork and colours used for the new extension would be the same as the existing school.</p> <p>XX explained that in the planning process you must consider other people's thoughts and so bright colours might not be best. JB said inside could be any colour though and it would be up to the headteacher to decide on that.</p>
<p>More people who live close by can now join the school from the estate (Parc Derwen).</p> <p>What about pupils who went to nursery, can they then join in reception? My neighbour couldn't join at reception after attending nursery.</p>	<p>XX explained that's exactly why we're looking to add this extension, to be able to let more pupils in, especially all those in the nursery. The extension is to be able to</p>

	cope with the demand of more people moving into the estate and local area.
There needs to be more inclusive items. We only have one pair of left-handed scissors and a computer mouse in each classroom.	The headteacher said that the school will getting more lefthanded equipment.
We would like more numeracy and literacy displays to exhibit work. These are known as “working walls”.	XX replied that they will have more display walls in the new extension area.
Can the pupils, who leave primary school to go to comprehensive school come back to visit if the new extension is built?	Yes! If the project goes ahead, we may hold an official opening and we could invite some pupils to attend, with approval from the headteacher and their parents.
The Schools Programme Manager thanked the School Council for their contributions. Methods for sharing views and how to ask further questions was outlined.	

## APPENDIX 3

### Pupil voice / pupil leadership workshop

Each bullet point represents a sticky note on each of the A3 sheets.

#### We like / we are excited about:

- We could use more space, pupils and resources in the school. We also need more playing equipment, Ipads, and laptops. If they would come with the extension that would be great.
- Will there be a third floor?
- It will be good because you have the chance to become best friends with other people.
- I'm excited to extend the school because more children who live locally can join. Having a larger school will bring more people to socialise with.
- People who could not get in before can now get in. We would have the opportunity to meet more people. We need more resources too!
- Excited to make friends, see the colour of the new classrooms and to see the final product.
- We're excited for more space, more children, more resources, more equipment and more classrooms.
- I'm excited for more children to learn more things and we can learn about them too.
- We as a class are excited for more opportunities for younger children, new teachers, more new children, bigger yard, more opportunities for children to get a good education, more children would get a chance to attend the school, with more children we make more friends.



- The yard is getting bigger, and we are excited for other people to experience this.
- More space, more children, more resources, more classes and more experiments.
- Happy and excited to have more people, but nervous as the playground will be small.
- Excited to learn maths on Ipads, more experiments, more / bigger school trips,
- We can ask about what they know, meeting others and learning from others.
- Excited to make new friends, more space for people to join our school, new teachers and new equipment.
- We are excited to get a balcony, tree area, playground, car park, changing rooms, top of the yard, make the hall small, room by offices, field, 4G, grass on yard, bike shed by nursery.
- Excited for it, but sad as we won't be there to see it when its finished, if we get another year 6 class where will it go? Is the yard going to lose space? How will we pay for more tech? What will happen with the timetable of PE? Are we getting a yard extension? What about break time?
- A good thing for more to come here and learn. Worried about class sizes? Excited to meet new people and have more friends. Worried as our yard is already too small, where would it go? My siblings can now join the school. Will it affect our learning and experiences?
- I like that we would have more space to learn new things and it is exciting that we would make new students into our lovely school.
- More space for everyone. The school will be better.
- Would the staff room get bigger? Excited that you could make new friends and classmates. Would be bigger. I like it when there was older and younger children. More people will learn. Excited to see change. Worried that the yard is going to shrink, would we be able to play on the 4G? Where would we put the extension?
- New classmates, more things to play with, more space to explore, makes people happier.

### **Thoughts / unsure of:**

- Where is it going to be? Will it be upstairs and downstairs? Will there be mixed classes? Where will the playground be?
- Will there be extra yard space? Will there be a bigger hall?
- How big are the classrooms? How many people will fit on the yard? How are you going to make the yard bigger? What is the floor going to be like?
- Space?
- Hall store room, under the stairs, changing rooms, outdoor storage boxes for each year group, build a shed?
- What year groups will there be? Will it take up any of the junior yard? Will you still be able to come to school if they are building? Will we have playtime when they are building?
- How will they join the building with a corridor?

- The things I'm unsure about are: Are we making the lunch hall bigger? Will we need more dinner ladies and teachers? How will we make the yard bigger? (since there isn't much room)
- Playground areas are already too small, will building work affect our learning and experiences (play, PE, etc)? Class sizes. Where will the extension go? Lunchtimes, assembly and PE. Congestion at the beginning / end of the day.
- What would happen to the lunch rota because year 6 barely get lunch? Where would the classrooms go? Would there be mixed classes?
- How do we get more technology? Unsure where to put the extension, and the timetable for PE.
- Where would we put the extension?
- Will the hall be big enough? Will the extension be disconnected? How will dinner be managed? Could they extend the kitchen? More stuff to play with. More clubs. Good idea because not enough room for all children. Part of extension will be down to the 4G? More supervisors for lunch. More staff, more cooks, more tables?
- What about the space? Will there still be space?
- Where to put playground stuff? In boxes or a cuboard?
- What about new teachers? How many new classrooms? What about more resources? What about more toys? What do the drawings look like?
- Where would play times go? What would the classrooms go?
- How will they stop it getting cold? When will it start? When will they finish? How big will the classrooms be?
- What will happen to the children in the school when the work is being done? Will the school shut down?
- How much would it cost? Would there be enough room for the extension?
- Where is it going to be? Too many children for things like assembly? Our yard will get smaller, will things change for the fire alarm? Will there still be enough space for children? Less space to play, will the building work distract children?
- Thoughts: Make the yard shorter. Will the other classrooms change with the extension? Unsure: Where would the classrooms be? And why are you doing it? But it is a good idea.

### **Local authority response:**

#### **Budget and finance**

The allocated budget for the project is £1.65m from the local authority's capital resources. The local authority has entered into a separate section 106 agreement in respect of additional housing in the area. Once received, this will be offset against council capital.

#### **Resources, ICT, furniture and equipment**

There is a budget within the project for resources, which includes furniture and ICT equipment.

#### **Why are we proposing a four-classroom extension?**

The aim of the four-classroom extension is to enable more pupils to attend Coety Primary School. The extension will provide additional capacity to accommodate the increasing demand for places arising from new housing developments within the local area.

### **Where will the extension be located?**

For the purposes of the options appraisal and site fit study, the extension was located on the eastern side of the school. However, the architect will need to determine the most suitable location for the proposed extension and will need to consult with the school to ensure that it meets the school's needs.

### **Will the extension have three-floors?**

The local authority has never built a three-storey primary school. This is not something that is usually considered outside of city centres. In addition, the structure of Coety Primary School would not be able to support a third floor.

### **Will the extension fit?**

The proposed site layout has been designed to demonstrate that a four-classroom extension and the required space for outdoor play can be accommodated at the site.

### **Mixed classes**

There will be an extra half a form of entry, meaning there will be one split class (for example, two year 6 classes and a mixed year 5 and 6 class). The number of pupils in each class will total to 30 students.

### **Size of classrooms**

The proposal will provide four additional classrooms, each being 56m<sup>2</sup> in size. There will be circulation space, toilets, cloakrooms, two cleaners' stores and four classroom stores.

### **Net Zero Carbon**

The extension will be designed and built with better thermal standards than the current school and will meet the requirements of the Bridgend 2030 Decarbonisation Strategy and will be designed using Net Zero Carbon principles.

### **Playground space and 4G pitch**

The location of the playground space will remain where it is. The flat area of grass by the banking can provide the potential to extend the yard space to the foot of the bank, creating an additional net gain of 380m<sup>2</sup> of yard space. The local authority will aim to accommodate as much additional yard space as possible, within the area guidelines stipulated in Building Bulletin 99 Briefing Framework for Primary Schools.

The games courts will be painted on the yard, which will allow for different games like basketball, netball and football. The court will not have any fences or barriers.

As a result of the consultation process the local authority will explore options for a secure access point to the 4G pitch, to allow pupils a safe route to additional play space. Officers will work with the school to ensure the yard space is sufficient and if the proposal goes ahead would consult with staff regarding their requirements.

Playtimes and sports lessons will be determined by the headteacher.

### **Hall space / catering**

The hall and studio area are within the parameters for a 2.5FE school. Extending the hall will not resolve the situation of reducing the lunch service time, as pupils cannot all be served their meal at the kitchen hatch at the same time. There is a need for a continuous lunch time service. This will allow pupils to have their lunch on a rota system and potentially with an extended lunchtime when Universal Primary Free School Meals (UPFSM) is rolled out. The school will need a longer lunch period for the kitchen to cope with the additional UPFSM. Additional combi-ovens are being ordered for the kitchen which will be sufficient to meet the increased number of meals. Catering Services has indicated that there is potential to improve the meal service by providing an additional free-standing servery.

Continuous lunch service would be required with tables/seats being rotated as pupils leave the hall instead of sittings. The kitchen can batch cook foods throughout a continuous service to ensure the food is at optimal nutrition and quality. In addition, continuous service and rotation of pupils will speed up the service time

### **Will we need more dinner ladies?**

With the launch of the Universal Primary Free School Meals (UPFSM) scheme, there may be a need for the school to employ additional lunchtime staff. This will be for the school to risk assess as and when UPFSM is rolled out should the lunchtime need to be extended.

### **Staffroom**

Officers will align the size of the staffroom to meet the increase in staff numbers, in-line with Building Bulletin 99.

### **Construction start and finish dates**

The construction work will begin in February 2024 and the new classrooms would be open in January 2025.

### **Construction work – disruption**

The team will work closely with the headteacher, governors and staff by planning the programme around the needs of the school to limit disruption during the construction phase.

Should the scheme progress, the school will remain open during the work. Careful consideration needs to be given to where the contractor is based and how they will access the working area. There will be time restrictions in place to limit contractor movements and deliveries.

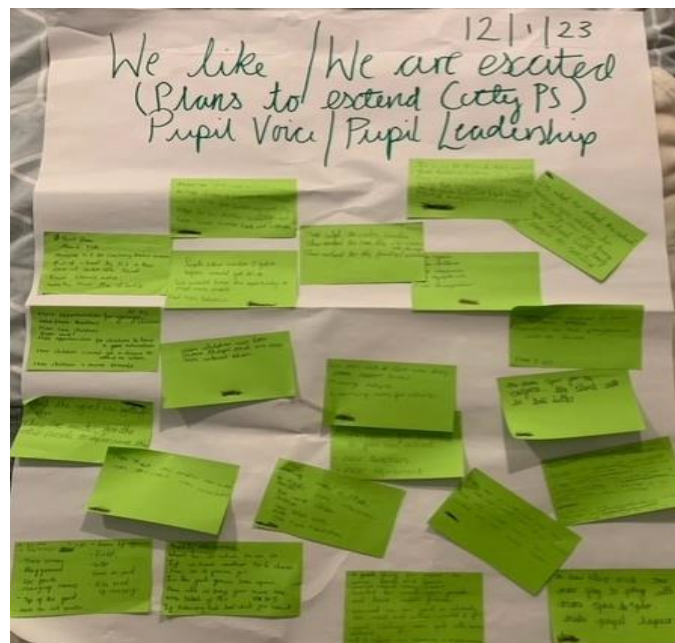
### **Traffic congestion**

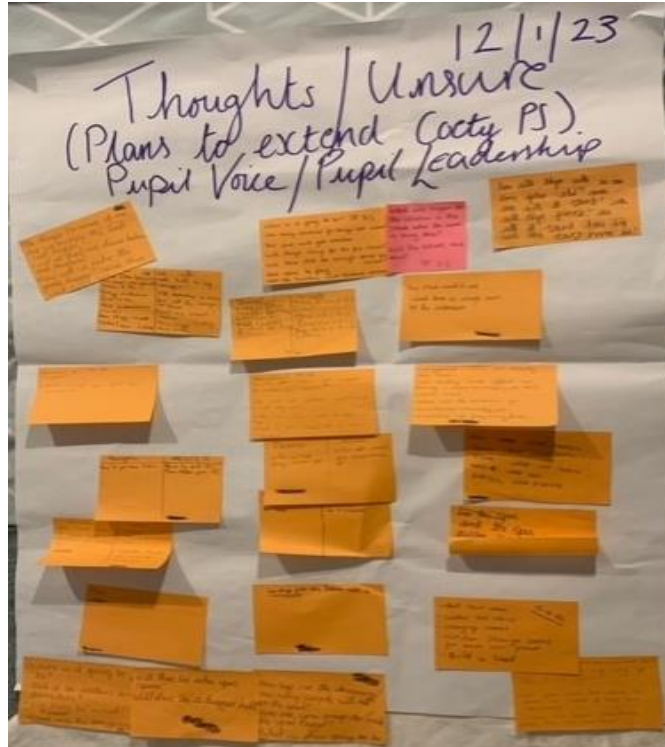
If approval is received to progress this scheme, a full traffic impact assessment (TIA) will be undertaken. A TIA will identify what measures will be taken to deal with the anticipated transport impacts of the scheme relating to all forms of travel. The TIA will be considered by the local authority's Highways Department, and they will ensure that any improvements suggested are taken forward as part of the planning process. Officers will also work with the school to develop a School Travel Plan, which will promote sustainable ways to travel to and from school, by promoting walking, cycling, public transport and car sharing.

### **Storage solutions**

Storage will be considered as part of the project, and we will engage staff and pupils at the design stage to consider options.

### **Photographs of preparation work undertaken by school pupils for the consultation meeting:**





## APPENDIX 4



### **Coety Primary School Consultation Meeting with school staff**

**Thursday 12 January 2023 at 3:40pm**

Present: BCBC staff x 5  
Headteacher of Coety Primary School  
Coety Primary School staff  
Representative from Unison Trade Union  
Representative from GMB Trade Union  
Representation from Bridgend County Borough Council Human Resources

The Head of Education and Family Support Directorate introduced the consultation session and set out the purpose of the meeting, nature and process of the consultation and outlined the proposal. The team from Bridgend County Borough Council introduced themselves. The Strategic Resources and Planning Officer provided an overview of the proposal with a PowerPoint presentation. The Principal Architectural Assistant presented the draft plans and site layout. A question and answer session then followed:

<b>Questions/Issues</b>	<b>Answer/Comments</b>
<p>How big will the cloakrooms be? Will there be enough space to safely include hooks? Referring to the ones in the CAD design just off the new classrooms.</p>	<p>XX provided an overview of the location and explained that the hooks in the cloakrooms will be a safe distance from the walkway space, there are set regulations on these distances.</p>
<p>If the netball / basketball court will be constructed as well as the extension, won't that limit the yard space?</p>	<p>XX explained that the court will be flat, with lines drawn on the ground and no fences or barriers.</p>
<p>Would the school be able to make better use of the 4G field as the yard is not big enough now, it still won't be big enough with what you are proposing, especially with additional pupils. Also, will the green space beyond the embankment be affected? The green area is used as a 'forest school'. The area is very muddy.</p> <p>Can there be access to the 4G pitch? This would be a potential resolution to create additional yard space. Perhaps building a path between the 4G pitch and the school could be explored? Pencoed Primary School used as an example.</p>	<p>XX explained there is potential to create additional access to that area. The tree area will remain for the forest school.</p> <p>XX explained this option was previously explored, but there was a safeguarding issue as the path is not on the school ground. It is worth exploring as an additional option as it is an under-utilised feature of the school currently. Betws Primary School was then used as an example.</p> <p>XX Explained we will explore whether it is possible to create a link to the 4G pitch from the school site. XX added that in terms of safeguarding there could be ideas generated and solutions found.</p>

<p>XX mentioned that the green area beyond the yard is used by staff and pupils, but only the wild area will be at risk of being lost if the yard space is expanded, which is likely to be the case.</p>	<p>XX and XX agreed that the usable green space will not be affected.</p>
<p>Will the hall space be extended? We have to stagger lunch sittings and this has an impact of physical education. With the increased number of pupils at the school, will this be made worse?</p>	<p>XX The halls will be within the area parameters for a 2.5-form-entry school.</p>
<p>Will there be any sustainable materials or construction practices used?</p> <p>What building company will undertake the extension?</p>	<p>XX wanted to add that the yard space per pupil will be similar, if not marginally greater than what the current value is. Also, that the GIS and CAD images are just high-level sketches, not the final proposed option.</p> <p>XX answered that we will undertake a procurement exercise through the South East and Mid-Wales Collaborative Construction Framework (SEWSCAP) to ensure quality control.</p> <p>XX and XX expanded on the Net Zero Carbon scheme and the need to be aware of the sustainability for the materials.</p>
<p>Why do we need the extension, and will the council continue to consult with the school on it?</p>	<p>The project team will engage with school staff and pupils throughout the design and development stages. You will be involved in decision making to ensure the design will work for the needs of the school.</p> <p>The sketches you are seeing today are in draft format to demonstrate site fit; that is to show that a four-classroom extension is achievable within the space available.</p> <p>During consultation with pupils, the same question arose and the Headteacher used the example of the pupil with their next-door neighbour unable to transition from nursery to reception. This clearly shows there is existing demand for additional pupil places at the school.</p>



<p>The staff room could be potentially extended, how will that be decided?</p>	<p>XX explained that there are guidelines. There is potential to extend the staffroom over the veranda.</p> <p>XX added that the veranda would be likely the only option, without splitting into two separate staffrooms.</p>
<p>Surely there would be access issues to the school for the builders, there will be resistance, how will it be managed when its being built?</p> <p>Pupils are concerned about break time and limited space outside during construction.</p> <p>XX said that there will be additional plans in place for safeguarding for when contractors on site.</p>	<p>XX explained the contractors will need to see the site and conduct initial evaluations first. Their movement will be limited to certain times of the day. A plan will be created between the headteacher and contractor, with safe routes and a dedicated area for works. We accept it won't be easy, but we'll consider all stakeholders and their priorities.</p> <p>XX said that options will be discussed as mentioned before, pupils needs will be put first.</p> <p>XX also added that perimeter safeguarding issues with the path and right of way of the public, will be explored as well when in the construction stage.</p>
<p>The projection figures in the consultation document, show an increasing number of pupils in the coming years. Will the school be extended even further in the future?</p> <p>What will happen with the catchment area for the comprehensive schools and primary schools in the area in the future?</p>	<p>XX said this will be the only extension for this school. The projections are expected to grow more and more, but there are other tools to help with this issue (for example, reviewing, and if necessary amending catchment boundaries).</p> <p>XX said that the main secondary catchment school is Pencoed Comprehensive School. The purpose of catchment areas are to educate pupils in the immediate and close vicinity.</p> <p>A map of the catchment area of Coety Primary School was shared with the group with key areas explained and why they were included at the time of creation. Key points were the Coychurch Primary School</p>

	<p>exclave and the lack of development in Parc Derwen at the time of the drawing of the catchment area. The vast majority of what is included is the immediate area.</p>
<p>We are concerned that the yard, hall, and kitchen space are not big enough.</p>	<p>XX explained that kitchen space is a topic that is currently being investigated due to the Universal Primary Free School Meals scheme. Two new combi-ovens have been ordered, which will cover the additional pupil numbers. The size and usage of the kitchen is comparable to that in Pencoed Primary School, even though it is a different shape.</p> <p>XX mentioned the lessons learnt from Pencoed Primary School have been taken on board and we can apply them here.</p> <p>XX said that the Catering Services Manager mentioned an issue in getting the pupils served. One possible solution could be a free-standing serving unit.</p>
<p>The timing of the mealtimes and PE times will be affected further and that is a concern.</p> <p>XX add that it takes 1 hour 55 min to get all the year groups through for lunch.</p>	<p>XX explained that for Universal Primary Free School Meals scheme there have been no hall extensions. Only kitchen floor space has been reviewed. Increased sittings are expected, but logistically an additional serving unit is a possible solution that can be explored.</p>
<p>The trade union representatives raised their concerns that staffing numbers will be increased over time and that they are not being given the appropriate consideration.</p>	<p>XX clarified that the Governing Body would determine the staffing structure.</p> <p>The appropriate ratio of pupils to staff must be maintained, so it is likely that the staffing structure would be expanded.</p>
<p>Where will the source of funding for equipment and furnishing for the classrooms come from?</p>	<p>XX said that they will be included in the budget. Also, the school will fund certain aspects like screens and hardware for specific information and communications technology needs.</p>
<p>The topic of nursery capacity was brought up by the group.</p>	<p>Children aged three-to-four years attending full-time nursery should be able to transfer into reception as the PAN aligns to the</p>

	number of full-time nursery places. This proposal is aimed at improving the position of those children who currently are unable to transition from nursery into reception. However, the statutory school admissions process will apply, as per the School Admissions Code.
XX thanked officers for their presentation and time.	The Head of Education and Early Years closed and thanked all participants for attending. Further questions can be emailed to the Strategic Resources and Planning Officer.

## APPENDIX 5



### Coety Primary School Consultation Meeting with Coety Higher Community Council

**Tuesday 12 January 2023 at 6:15pm**

Present: BCBC staff x 5  
Headteacher of Coety Primary School  
Group Leader for Bridgend County Council Independents and Coety Higher Community Council  
Coety Higher Community Council

The Head of Education and Family Support Directorate introduced the consultation session and set out the purpose of the meeting, nature and process of the consultation and outlined the proposal. The team from Bridgend County Borough Council introduced themselves. The Strategic Resources and Planning Officer provided an overview of the proposal with a PowerPoint presentation. The Principal Architectural Assistant presented the draft plans and site layout. A question and answer session then followed.

<b>Questions/Issues</b>	<b>Answer/Comments</b>
Points raised by XX are as follows:  1) Staff room size. 2) Playground Space. 3) Governor Capacity. 4) Hall space.	It was explained that the local authority will respond to the comments once we have received the Word document detailing the points raised.

<p>5) Surrounding area/drop off. 6) Projected numbers.</p> <p>XX will email a copy of the comments to the EDSU team.</p>	<p>A copy of the correspondence and the local authority's response is contained in appendix 7.</p>
<p>I echo the previous points made. I am not impressed, and I see this as not being good enough. At best this is just an option.</p> <p>Persimmon Homes are willing to give you the undeveloped land to the front of the school, why are you not taking them up on the offer?</p> <p>We must link the 4G pitch to the school site and move the nursery yard itself.</p>	<p>XX reiterated that the designs were still in the draft stage to demonstrate the extension can fit on the land available. If Cabinet decide to proceed with the proposal, further consultation with the school and stakeholders would be undertaken.</p> <p>XX responded that the local authority has not been approached by Persimmon Homes and this is the first-time officers have been made aware of this opportunity. If this offer is available, we will explore this option.</p> <p>XX agreed that connecting the 4G pitch to the school site would be beneficial and it will be an option that will be explored.</p>
<p>As the Coety Community Council Chairman I speak on behalf of the elected members, and we do not support this proposal. I would like to thank the local authority officers for their time and effort in conducting this consultation.</p>	
<p>The Headteacher shared the positive outcome from the pupil consultation. Generating thoughts, comments, and questions in a workshop before then going back to their classrooms to collect and highlight further comments. The Headteacher used the example of the pupil with their next-door neighbour unable to join transitioning from nursery to reception, as well as sharing their excitement for the opportunity to make new friends with more pupils.</p> <p>The pupils were fantastic, articulated, and confident in providing their views.</p>	<p>The Headteacher thanked officers for holding the two consultations earlier this afternoon. XX then thanked Coity Community Council for their attendance and thanked officers for attending, then ending the consultation.</p>

Additional Note: There were technical issues at the start of the consultation, councilors could not join for the first 15 minutes, the consultation started at 6:30pm.

## APPENDIX 6



**Coety Primary School Consultation**  
**Open Event**  
**Monday 16 January 2023 at 5:30pm**

Present: BCBC staff x 5  
Headteacher of Coety Primary School  
Group Leader for Bridgend County Independents and Coety Higher  
Community Council  
Parents

The Head of Education and Family Support Directorate introduced the consultation session, the project team introduced themselves. The Strategic Resources and Planning Officer presented the proposal to the group through a PowerPoint presentation. The Principal Architectural Assistant presented the draft plans and site layout. A question and answer session then ensued.

<b><u>Questions/Issues</u></b>	<b><u>Answer/Comments</u></b>
Parents thanked the officers for the presentation. A resident backed onto the back of the school asked about the consultation process, will we get consulted on the final option / options when chosen, or will it only be this stage?	XX answered saying it would be possible to consult on specific options, and during the planning application, there will be opportunities to include more consultations. Usually, we don't consult with residents after this stage, only through the planning

	<p>process, but we can include additional consultation on specific options if it is requested.</p>
<p>There will be an impact on the residents that are backed onto the school, would it be possible to add extra trees along the border?</p>	<p>XX responded saying we could consider this before we put forward the planning application.</p>
<p>In healthcare, infrastructure is built with an additional 30% excess in capacity to allow more time before expansion is needed. What measures are taken / longer term measures on additional expansion?</p> <p>Could you possibly build the school over three-floors?</p>	<p>XX commented that the local authority is not in a position to include a 30% capacity excess for future-proofing our facilities. We would do that if it were possible.</p> <p>The site is sufficient to accommodate a 2.5-form-entry school, but this means the site will be at full capacity. More than half a form expansion for educational infrastructure rarely happens unless you replace the school entirely.</p> <p>XX responded that the local authority has never built a three-storey primary school. This is not something that is usually considered outside of city centres. In addition, the structure of Coety Primary School would not be able to support a third floor.</p>
<p>There is concern for the lack of plans for the hall and kitchen facilities. 120 additional children will exacerbate the time and space constraints already on the facilities. There is a worry that there will be further impact on PE lesson time.</p>	<p>XX answered, the kitchen facilities are sufficient with the additional equipment ordered from the Universal Primary Free School Meals scheme, with an upgrade to both the current combi-ovens. Regarding the hall floor space, the existing hall and studio is within the parameters for a 2.5 form entry school. The Catering Services Manager has mentioned an additional free-standing servery unit, thereby providing a second serving area.</p>
<p>Additional comment in the TEAMS chat  “Fully agree with your points - appropriate space for PE and well-being is so important. The 4G is an amazing facility - needs to be fully accessible and utilised by the community and the school.”</p>	

<p>Points raised by XX are as follows:</p> <ol style="list-style-type: none"> <li>1) Staff room size.</li> <li>2) Playground space.</li> <li>3) Governor Capacity.</li> <li>4) Hall space.</li> <li>5) Surrounding area/drop off.</li> <li>6) Projected numbers.</li> </ol> <p>Detailed comments on each of the points raised will be emailed to the EDSU.</p> <p>Additional comments made outside the document scope:</p> <p>I have attended a number of these meetings now and feel that the council are likely to ignore the comments that I am about to make, just as they have done in past projects.</p> <p>I speak to the Corporate Director Education and Family Support Directorate and the Group Manager for Business Support within the Directorate every year on the topic of catchment areas. There are constant mistakes year-on-year. I was told there would not be a catchment review, and no one has contacted me to consult on a catchment area, I was told that I would be consulted at an early stage in the process. It would take at least two years to complete this. We need clarity on this from the council.</p>	<p>It was explained that the local authority will respond to the comments once we have received the Word document detailing the points raised.</p> <p>A copy of the correspondence and the local authority's response is contained in appendix 7.</p> <p>XX commented that there must be a catchment area review due to the areas that are included in the current catchment and the expansion of local housing estates. Fields that were once used for agriculture are now being developed into homes. XX has already started a high-level review. The reason XX has not contacted you yet is because the process is in the initial stages, it is too early to involve stakeholders. XX assured XX that XX will be in touch at the appropriate time.</p>
<p>The pupil admission number (PAN) is increasing from 60 to 75. Will there be a review to the catchment area? I am out of catchment, but I only live 0.3 miles away</p>	<p>XX replied saying that the nursery placements have not always previously aligned. Going forward, a 75-place nursery (full time) would align to the PAN at</p>

<p>from the school. My children are in separate schools after the transition from nursery to reception, which is crazy, I am having to drive to get both in on time, which I am still unable to do each morning.</p> <p>These issues are always on the backburner, there is no way for us to initiate an investigation / process to review these things as a member of the public.</p>	<p>reception. A catchment review will be conducted and this will be done as a separate process.</p>
	<p>XX thanked all parents and participants for their contribution to the meeting and for their attendance and thanked all officers for attending all the consultations, before closing the consultation.</p>

## APPENDIX 7

### Direct correspondence received:

I am fully supportive of the requirement to increase the capacity of coety primary school.

I am a homeowner on fford y draen which backs directly onto the coety school boundary. I am unable to ascertain from the consultation document where the proposed extension of the school will be situated. Are you able to confirm this please? Will this be single or double storey?

As you can understand this could be visually impactful and imposing on our property. I would be keen to understand any plans in place to mitigate the visual impact with trees or other methods?

### Local Authority Response:

Thank you for your email regarding the above.

As the proposed enlargement of Coety Primary School is subject to a statutory consultation process under the School Organisation Code 2018, no detailed plans



have been developed to-date and landscaping is yet to be determined. However, local authority technical officers have considered the facilities required to enlarge the school and have developed high-level design options, purely to demonstrate 'site-fit'.

I can confirm that the 'site-fit' exercise demonstrates the need for a two-storey extension which would be located to the rear of the school (that is, an extension to the existing teaching wing) and would be located approximately 66 metres away from the closest residential property. Technical officers have advised that extending the school at this location will not impact on adjacent residential properties.

Notwithstanding the above, any scheme taken forward may take a different form once detailed surveys and design processes have commenced and residents will be able to comment on these matters during the planning application process, if the scheme progresses to that stage.

#### **Direct correspondence received (via Facebook):**

Are there any images that show what the extension will look like and where playground will be replaced?

#### **Local Authority Response:**

As the proposed enlargement of Coety Primary School is subject to a statutory consultation process under the School Organisation Code 2018, no detailed plans have been developed to-date. Local authority technical officers have considered the facilities required to enlarge the school and have developed high-level options, purely to demonstrate 'site-fit'.

Should the proposal progress to the design stage, designers will engage with stakeholder groups and their input will inform the layout of the building and external spaces, including the playground.

#### **Direct correspondence received:**

I am supportive of the proposals in general, it is clear that additional capacity at the school is required, however little detail seems to be available on how this will work in principle.

The playground space for the children is already limited, an extension to the school should not be at the detriment of the children already in the school or those that will attend in the future. The consultation states that more playground space will be made available. I would like to see further plans of this before supporting as I fail to see how this will be possible. How does the proposal support the Play Sufficiency and Action Plan, specifically number one of the action plans focus areas "**Supporting better play opportunities in primary schools**"

Will there be additional hall space to ensure that all children are able to eat lunch within the 12-1PM lunch hour? Extending the lunch period for longer (until 2PM for

example) is not a reasonable solution, when you have children, many of whom attend breakfast clubs from 7AM at the school, you could then be expecting them to wait until 1.30pm for lunch. That I do not feel is acceptable for Primary School children. Extending the lunch time period will also impact on other use for the hall....ie...PE lessons, School assemblies, group activities etc. Getting children outside as much as possible to exercise is great, but we have to be realistic the British weather and realise that this is not always possible.

Traffic and Transport - the proposal will inevitably lead to increased traffic around the school - whilst the majority of the children there will live within walking distance, again, the reality is somewhat different. Parents usually undertaking the school run have an onward journey, thus use their car. The Great British weather also forces residents to using their cars to get to school. The red "safe crossing" points, which the children had been taught to use by the schools own safety lessons when taking the children out to teach them how to cross safely have now been painted over with yellow zig zags, making them redundant to cars but children still using them, as they have been taught. This also needs to be looked at. Since the yellow Zig Zags were painted to restrict parking during school drop off times, the reduction in parked cars in the street has resulted in an increased speed in cars using this road. The parked cars previously provided a natural speed cushion and would naturally slow traffic down to allow oncoming vehicles through. This needs to be reviewed in its entirety and the Council take the safety of children attending the school seriously and not to avoid responsibility by stating that it is the parents duty to ensure a child gets to school safely. Child safety is everyones responsibility and the Council has a duty to provide a safe walking route to school, which I do not believe is currently the case for Coety Primary School. Perhaps widening the road at Ffordd Yr Hebog can be explored to provide parking bays which are located in the surrounding streets? Perhaps residents parking permits could be issued for Ffordd Yr Hebog so a minimal amount of cars can park on the surrounding streets, providing that natural speed cushion but not limiting visibility for parents and children attempting to get to school safely.

Currently there is no safe drop off point for families, will this be part of the proposal or will families have to continue to stop on double yellows while their children exit the vehicle? There needs to be a practical solution as part of the proposal.

I look forward to seeing the proposal in detail and how consultation feedback has been incorporated.

### **Local Authority Response:**

Schools and education are part of Welsh Government's Play Sufficiency Duty, where all schools are expected to provide a rich play environment and recognise the importance of play for children's and young people's development. Sufficiency is referenced in terms of the quantity and quality of opportunities and considers how children and young people can make flexible use of the space that is available to them. This can include use of resources in spaces (beyond fixed play equipment) and the use of people to help create play friendly environments. Play also include activities such as recreation, sport, and arts.

The proposed site layout has been designed to demonstrate that a four-classroom extension and the required space for outdoor play can be accommodated at the site. The flat area of grass by the banking provides an opportunity to extend the yard. This would result in an additional net gain of a minimum of 360m<sup>2</sup> of yard. The local authority will aim to accommodate as much additional yard space as possible area guidelines stipulated in Building Bulletin 99 briefing framework for primary schools. The local authority will explore options to provide a secure access from the school site to the 4G pitch This will allow pupils a safe route to additional play space. Subject to the outcome of the statutory process, officers would formally consult with the governing body, staff, and pupils of Coety Primary School in respect of the design to ensure their needs are met.

The hall and studio spaces at Coety Primary School are within the m<sup>2</sup> parameters for a 2.5-form-entry school. Catering Services has indicated that there is potential to improve the meal service by providing an additional free-standing servery. This will assist with providing a continuous service with tables and seats being rotated as pupils leave the hall, instead of formal sitting. The kitchen can batch cook food throughout a continuous service to ensure the food is at optimal nutrition and quality.

National Planning Policy dictates that priority must be given to active travel and public transport above other forms of transport including car use. As a result of this, it is suggested that all schools and colleges assess their travel needs and develop a school travel plan. The school will continue to engage with pupils, staff and parents to develop a robust School Travel Plan which will promote sustainable ways to travel to and from school, by promoting walking, cycling, public transport and car sharing. An option that was discussed during the consultation meetings is to consider the implementation of a “school street” (that is, a part-time restriction on vehicles outside schools during drop-off and pick-up times). This is an initiative that officers can explore with the Council’s Highways and Transportation teams if approval for this scheme is received from Cabinet.

If approval is received to progress this scheme, a full transport impact assessment (TIA) will be undertaken. A TIA will identify what measures should be taken to deal with the anticipated transport impacts of the scheme relating to all forms of travel. The TIA will be considered by the Council’s Highways team, and they will ensure that any improvements suggested are taken forward as part of the planning process.

#### **Direct correspondence received:**

Notes regarding the consultation of the expansion of Coety Primary School.

Staffroom places:

Currently 42 members of staff use the staffroom and it is already too small. Staggered breaks are required but any more will undoubtedly have to eat into teaching and learning time. The current plans will increase the number of staff by a further 8 requiring use of the staffroom.

### Playground space:

I've been a governor for 12 years. I was involved in the consultation of the new build and then when the school opened, raising concerns regarding the school play space. The junior yard is far too small and a ROSPA report confirmed this. However, the LA argued that the mud/grass banking and grass at the end of the school grounds were suitable play space. In the rain children are filthy and wet when going onto the grass. Children on the yard are also bumping into one another. When I have visited other new build schools recently it is apparent how much more play space is at each of them. The play space is also all attached. It is ludicrous that the 4g play area is not attached to Coety Primary School, like the pitches in all other schools in the area. This would give the children far more play space available. It's currently under-utilised as there needs to be two members of staff per year group in case any child needs toilet facilities and they need to be walked out through the public areas. I have met with the architect and XX previously to advise that the land next to the school is soon to be transferred to BCBC ownership (although Persimmon would happily transfer it now) and a suitable solution would be to step down from the junior yard to the 4g pitch placing a yard/netball/basketball court next to the 4G pitch in the area that is currently treated as waste ground. This would provide the children with the space that they need and deserve. With the new curriculum in Wales and the Wellbeing of Future Generations Act, these issues should be at the forefront of any decision making. If this was suggestion was to be taken up then it would leave more space on the current yard for an extension to run off the back of the school that has sufficient enough capacity for the children of Coity to attend.

### Governor Capacity

I am concerned that BCBC have said that there are sufficient governors at the school and that this will not be increased. Having looked into the guide to the laws I have ascertained that a primary school of 100 or more children can have a governing body of either 3 LA governors, 4 community governors, 4 parent governors **OR** 4 LA governors, 5 community governors and 5 parent governors and so to deny the school the option to expand is unfair particularly given that there are smaller schools in the borough with the larger numbers as well as other schools of a similar capacity with the larger governing body. As a proactive governing body that strives for excellence, us volunteers are exhausted and are in desperate need of expansion to provide the best support to the school and the children. We have never had an issue recruiting governors and therefore the increase in numbers should be agreed in line with other schools. I cannot understand why this is opposed.

### Hall space

I am seriously concerned that BCBC feel the hall space is adequate and will not require expansion. Officers at the consultation meeting suggested that other schools such as Pencoed Primary don't have an issue and have capacity for 610 children. This is not true. Pencoed Primary children who have sandwiches have to eat in their classrooms and they serve meals from 11:30 to 1:30. They will not have capacity when universal free school meals is rolled out. In Coety, currently, the busiest day is burger day when just over 200 children have a school dinner. To accommodate lunches, they run from 11:20 to 1:15pm. 50 out of the 60 children in reception have taken up the offer of free school meals. This equates to 83.3% of children. When you apply this to the projected capacity of 610 children, it will mean that 508 children will probably sign up to free school meals when it is available to all. This would

mean that school dinners will need to operate from at least 11am to 2pm, if not longer. This is unacceptable and it will eat into teaching and learning and make the hall unavailable for other activities such as PE. This is in direct contravention of the Wellbeing of Future Generations Act requirement to be working towards a healthier Wales. As a governor at the old Coety Primary, both myself and staff raised concerns that the hall was required to be of a large enough size to be fit for purpose and those concerns were ignored then. I do have a copy of those minutes. To not increase capacity now would be unacceptable.

#### Surrounding area/drop off

I questioned whether a residents only permit could be introduced to part of the street that the school is in (Ffordd yr Hebog), which seems to be successful in other authorities. It would make it much safer for children as currently parents are driving too fast, dropping off on the double yellow lines and parking on the zigzags. The remainder of the double yellow lines also need to be completed outside the school. This was agreed following HSE's visit to the school and I've had to inform them that this remains outstanding with me being passed between departments and no one interested in taking control of the issue.

#### Projected numbers

Your figures set out that in January 2024 (a year before the extension is due to be completed) there will be 603 children within the estate who will most likely require a place at Coety Primary School and 652 children requiring a primary place. In January 2025, when the extension is due to be opened, there will be 610 places available. The school will already be too small. This is without any further development in the area. This is based on current households. In January 2027 there will be 760 children requiring a place in Coety Primary School and 809 requiring a primary place. This would mean there's a requirement for a 3 form entry school by 2027 although with not enough capacity for all children and a handful would be turned away from the school. I have significant concerns regarding the planned size of expansion. I have significant concerns that the priority is being placed on Welsh-medium schools at the detriment of the wellbeing of some English-medium learners. Since 2017 I have been raising concerns regarding in-catchment children being declined a place in Coety Primary because of lack of space and in those 6 admission cycles only 1 child declined a place has opted for a Welsh-medium school place as a third-choice placement because Litchard, Coychurch and Brackla were full. Many parents in Coity village don't apply for Coety any more either as they have chosen other English medium primaries because they know they will be declined a place. In fact over recent years, those living only 0.3 miles from the school are being declined a place. It is tearing neighbour's relationships apart and the argument that children are versatile and will get over being separated from their friends will not wash.

I do support the new Bro Ogwr school however, I cannot understand how a 2.5 form entry school has been approved here with a falling roll and yet you are failing to meet the demands of the children in Coity. Your Bro Ogwr figures show a roll of 356-369 in January 2027 and yet there will be 610 places in the school. I understand from the 2022/23 admission intake that there was also capacity at Bro Ogwr and yet you authorised portacabins to be placed on the Bro Ogwr site and yet Coety was not offered the same and 11 in catchment children were refused a place in Coety school

and 8 other children, 4 of who had siblings in the school and were deemed out of catchment despite living in Parc Derwen and very close to the school. I feel that these children are being discriminated against and that there should be the same rule for all with both being offered portacabins given the plans for expansion.

Coety Primary School needs to be expanded, however, this needs to be a three form entry school in order to meet demands. I asked the question in a recent scrutiny meeting for the MTFS as to why a Welsh-medium school can be built with capacity and yet an English-medium school cannot be built based on BCBC's projected numbers and was told that by the Cabinet Member for Education that the authority are able to, but that a Welsh-medium school would come with WG funding. Given that we know Coety will again be too small a year before the extension is open, there needs to be more thought of the strategic project and future requirements. The Wellbeing of Future Generations Act outlines a number of requirements including the importance of balancing short-term needs with the needs to safeguard the ability to meet the long-term needs and how acting to prevent problems occurring or getting worse may help public bodies meet their objectives. Therefore, by only building a two and a half form entry rather than a three form, you are only sweeping the problem under the carpet for a couple of years. Our children deserve better and they deserve to be treated as the individuals that they are rather than a number on a spreadsheet that can be manipulated to suit BCBC's plans.

As outlined in the consultation meetings, I welcome an increase in capacity to Coety Primary School but it has to be the right increase, with the right amount of play space, hall space, staff space and governing body. The children deserve better than that which is being proposed and BCBC have a chance to get this right. I confirmed that I am so passionate about the wellbeing of the current children and future children who will attend the school that I am prepared to call in any decisions that fall short and also seek a judicial review, funding it myself if necessary, so that I am protecting the wellbeing of our children and our future generations.

### **Local Authority Response:**

#### **Staffroom places**

Officers will align the size of the staffroom to meet the increase in staffing numbers, in-line with Building Bulletin 99.

#### **Playground space**

The proposed site layout has been designed to demonstrate that a four-classroom extension and the required space for outdoor play can be accommodated at the site. The flat area of grass by the banking can provide the potential to extend the yard space to the foot of the bank, creating an additional net gain of 380m<sup>2</sup> of yard space. The local authority will aim to accommodate as much additional yard space as possible, within the area guidelines stipulated in Building Bulletin 99 Briefing Framework for Primary Schools. As a result of the consultation process the local authority will explore options for a secure access point to the 4G pitch, to allow pupils a safe route to additional play space. Officers will work with the school to ensure the yard space is sufficient and will be consulting formally with staff in the future regarding design requirements, if approval for this scheme is received from Cabinet.

In relation to Persimmon Homes offering land at the front of the school, the local authority has not been approached, or received any communication regarding this opportunity. Officers will explore this further, if approval for this scheme is received from Cabinet.

### **Governor Capacity**

The membership of a school's governing body is set out in the instrument of government of the particular school, which must be in accordance with the Government of Maintained Schools (Wales) Regulations 2005. Those regulations specify the numbers of governors of each category (that is, parent governors, local authority governors, teacher governors, staff governors and community governors).

The current instrument of government for Coety Primary School already reflects the maximum number of staff governors (one) and community governors (four). However, the number of parent governors is currently four and this could increase to a maximum of five, the number of local authority governors is currently three and this could increase to a maximum of four, and the number of teacher governors is currently one and this could increase to a maximum of two.

### **Hall space**

All schools are designed as per Building Bulletin 99 area guidelines for schools. There is a hall and studio space in the school which falls within the area parameters for hall space. The Catering Services Manager will be consulted during the design development process.

The size of the kitchen at Coety Primary School is sufficient. Extending the hall will not resolve the situation of reducing the lunch service time, as pupils cannot all be served their meal at the kitchen hatch at the same time. There is a need for a continuous lunch time service. This will allow pupils to have their lunch on a rota system and potentially with an extended lunchtime when Universal Primary Free School Meals (UPFSM) is rolled out. The school will need a longer lunch period for the kitchen to cope with the additional UPFSM. Catering Services has indicated that there is potential to improve the meal service by providing an additional free-standing servery.

As part of the Universal Primary Free School Meal scheme, the Catering Services Manager has determined that two larger combi-ovens are required and has confirmed that this will also be sufficient to accommodate the additional pupils. The only issue identified was ensuring that all pupils are served food in a timely manner, a possible solution could be to incorporate a free-standing serving unit. The Catering Services Manager will determine if additional staff are required in the future.

Continuous lunch service would be required with tables/seats being rotated as pupils leave the hall instead of sittings. The kitchen can batch cook foods throughout a continuous service to ensure the food is at optimal nutrition and quality. In addition, continuous service and rotation of pupils will speed up the service time

### **Surrounding area/drop off**

National Planning Policy now dictates that priority must be given to active travel and public transport above other forms of transport including car use. As a result of this,

it is suggested that all schools and colleges assess their travel needs and develop a school travel plan. The school will continue to engage with pupils, staff and visitors to develop a robust school travel plan with priority given to non-car-based solutions, such as walking, cycling, scooters and public transport options. The local authority will explore the option to implement a “school street” (that is, a road outside a school with a part-time restriction on vehicles outside schools during drop-off and pick-up times), with the Highways and Transportation Department, if approval for this scheme is received from Cabinet.

### **Projected numbers**

Coety Primary School’s catchment area has been subject to major housing developments (that is, Parc Derwen and the Taylor Wimpey and Persimmon sites at Brackla northeast).

This proposal is part of a wider strategy to increase pupil places to serve the Bridgend northeast area which has been subject to this significant development. The Council has adopted a phased approach to expanding primary provision:

- Welsh-medium capacity being addressed as part of Band B of the School Modernisation Programme with Cabinet approval having been received to relocate Ysgol Gymraeg Bro Ogwr to a new site, which is located near the existing school site.
- Proposed enlargement of Coety Primary School to a 2.5 form entry school to increase provision.
- It is proposed to create additional primary pupil places at the residual Ysgol Gymraeg Bro Ogwr site which, with the enlargement of Ysgol Gymraeg Bro Ogwr and the proposal in respect of Coety Primary School, would ensure the demand for pupil places for the area would be met. An education options appraisal has been undertaken in relation to the residual Ysgol Gymraeg Bro Ogwr site and the outcome will be reported in due course.

The outcome of the above strategy will necessitate a catchment area review and preliminary high-level options have been considered. Any proposed changes can only be progressed in line with a decision regarding the education options for the residual Ysgol Gymraeg Bro Ogwr site. The views stakeholders would be sought in respect of any proposed changes.

### **School Capacity**

An options appraisal process was undertaken to determine the size of school. The outcome was to increase the school to 2.5-form-entry, that is, 525 pupil places and a published admission number of 75. As a result of the development and through mixing year groups, there will also be an opportunity to increase nursery provision from 72 to 84 full-time-equivalent places. This means that the nursery will have 75 full-time places, with 9 full-time-equivalent part-time places.

The school site is not large enough to facilitate a 3-form-entry school. The site will be at full-capacity if the four-classroom extension receives approval.



At this stage of the project, the site layout and general internal arrangement drawings have been produced to demonstrate site fit, that is to demonstrate that a four-classroom extension is achievable within the space available. If approval is received to proceed with the scheme, the design and development stage will involve further stakeholder engagement and consultation sessions to ensure that the extension achieves the needs and requirements of the school and pupils.

**Direct correspondence received:**



**Parents for Welsh Medium Education's response to  
Bridgend County Borough Council**

**on the**

**Proposal to make a regulated alteration to Coety Primary School,  
Ffordd Yr Hebog, Coity, Bridgend CF35 6DH by enlarging the  
school from 2-form-entry to 2.5-form-entry, with effect from  
January 2025**

**24 January 2023**

1. RhAG wishes to thank Bridgend County Borough Council for the opportunity to respond to this consultation on the **Proposal to make a regulated alteration to Coety Primary School, by enlarging the school from two entry classes to 2.5 entry classes, with effect January 2025.**

A Welsh medium education planning system through the Welsh in Education Strategic Plans must be a core part of the planning of education provision within each Local Authority. Since September 2022, Bridgend County Council has been implementing a new plan agreed by the Welsh Government.

Increasing opportunities for learners to be able to acquire the Welsh language so that they can use it comfortably is the basis of the Welsh Government's ambition to reach a million speakers and the Government's own Welsh medium education planning document states

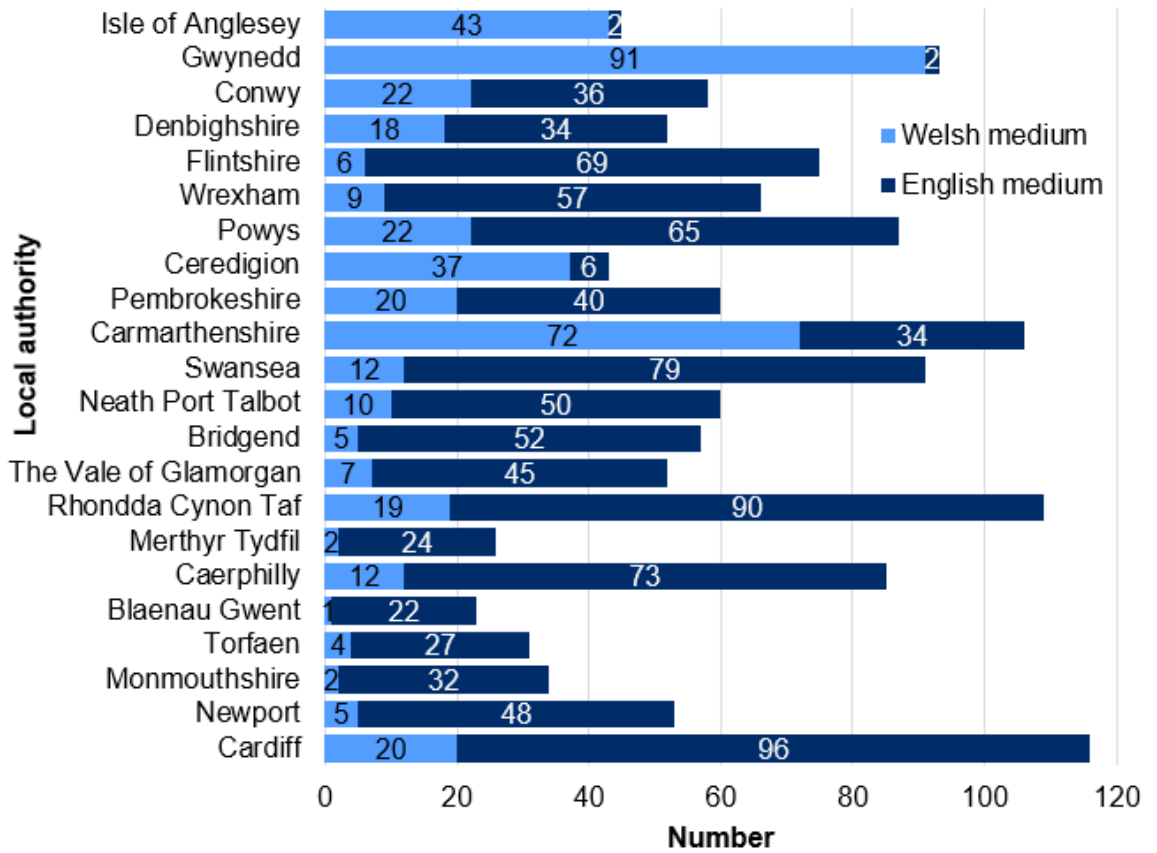
*“Cymraeg 2050 is clear that Welsh-medium immersion - which is where the medium of teaching and learning is delivered wholly or predominantly through the medium of Welsh - is the most reliable model for creating Welsh speakers with the skills and confidence to use the language comfortably in their everyday lives.”*

(Page 3:

<https://www.llyw.cymru/sites/default/files/publications/2021-02/canllawiau-gynlluniau-strategol-cymraeg-addysg.pdf>)

2. We realise the amount of work involved as part of the 21<sup>st</sup> Century Schools' reorganisation programme. RhAG has worked positively with officers in the county over the past few years and has contributed ideas and strategies in order to ensure fairness in the provision of Welsh Medium Education and for the families across the county who still do not realise that the offer is also available to them. With the implementation of the 10-year plans there is a real opportunity to make a difference in terms of the accessibility of Welsh Medium Education within the Bridgend County Borough area.
3. We only have to look at the figure below to see how few opportunities still exist in the county for pupils to be able to easily and conveniently choose a Welsh medium education.

**Chart 1: Number of maintained schools by local authority and medium, 2022 (a)**



Source: Schools Census  
 (a) Primary, middle and secondary schools (excluding nursery and special schools)

School Census 2022

- When reading the consultation document on the change to Coety Primary School, we were disappointed as the quality of the document which measures the potential impact this plan could have on the growth of Welsh medium education in the area, and especially on developments at Ysgol Gymraeg Bro Ogwr and Ysgol Gyfun Llangynwyd, nor the latest developments in relation to Welsh medium education in the Pencoed area, are sufficiently thorough or show enough consideration for the very fragile situation in this part of the county. While a study of the impact on the Welsh language is included with the consultation document, it is weak in terms of its quality and shows a lack of understanding of measuring the impact on language, and more importantly, it does not propose mitigation measures of any substance in response to any negative effects identified.
- The act of consultation has the responsibility to measure the impact on a

number of different aspects including the Welsh language, and this should be done at the beginning of the consultation process. A Local Authority must show that it is fully aware of the effects of implementing a plan that will have an impact on Welsh language education plans. This document is full of repetitive generalisations rather than providing the community with a clear picture and asking for their opinion on a plan whose impacts have been thoroughly measured from the outset, together with clear steps to mitigate the negative effects.

6. The term "initial impact study" is used once again on page 17. This is a lazy way of consulting in our opinion. Like any other aspect of the proposal, the public must be fully aware of the potential impacts from the outset.
7. The consultation is not transparent enough in terms of the impact on the Welsh language nor has it included sufficient details about the impact on Welsh medium education in the area.
8. It is disappointing to see that Coety Primary School was given a condition grade of B in 2021 (satisfactory) and that there is a maintenance backlog of £185,700 in the school. This is significant for a school building which is only a few years old isn't it? It raises the question about the level of expenditure on maintaining the county's school buildings and the ability to proceed with plans to build new Welsh medium schools. To what extent is the quality of the buildings of these relatively new schools a factor in the county's lack of urgency in developing new plans? Is this a valid concern??
9. I would like to point out that a 6th principle should be added to the 5 principles adopted in 2015, or at least an addition to the general wording.

The commitment to ensure opportunities for the provision of an accessible Welsh medium education for the county's learners should be a core part of these principles in order to reflect the county's commitment to developing opportunities for families to send their children to Welsh medium education provision.

10. Note the following statement in the consultation:

“Also, 1577 dwellings are now due to be delivered on Parc Derwen by the end of 2022/2023, which is slightly higher than the site capacity estimated by the existing adopted Local Development Plan allocation. As of April 2022, 71 of the 1577 dwellings were remaining on the final phase, of which 59 were under construction. The next site survey will be undertaken at the end of March 2023. The council has brought forward this proposal to enlarge Coety Primary School in order to meet the demand for pupil places.”

Why was consideration not given to responding to this demand for more places in Welsh schools? Is it only English medium education that is considered when an increased number of houses is being built? Could the Welsh offer have been considered in this area also?

11. If the purpose of this plan is to "address capacity issues at Coety Primary School", has consideration been given to how Welsh language provision would be able to assist with this?

12. Were the following questions considered in drawing up the consultation?

- Why don't families choose Welsh medium education in this area?
- Is a Welsh medium education sufficiently accessible to parents in this area?
- Do parents have a sufficient understanding of what a Welsh medium education is in this area?
- Are there enough opportunities for families to know what a Welsh medium education is in the County?
- Does the county's promotional activity reflect their vision and does it reflect the Welsh Government's vision of a million speakers by 2050?

13. The details shared by the county on page 14 are completely disappointing from a county perspective and show a practice that has been occurring too often over the years. Stating that learners have to go to Welsh medium education because they didn't get a place in English schools shows a negative and disappointing attitude in this respect. We know that when learners go to Welsh medium education most stay in the sector and acquire two languages from the outset. It is clear that education planning in this area is lacking and that sufficient action has not been taken to ensure that a Welsh medium education is sufficiently accessible and is promoted extensively enough in the area.

14. We need only look at the situation of Ysgol Bro Ogwr Reception class in 2021 when it was overcrowded and pupils from the Pencoed area were rejected. The county was called upon to ensure adequate provision for the area and we continue to wait for provision for the Pencoed area. We of course welcome the small increase to Bro Ogwr's capacity in the new building but this increase is small.

15. There are also concerns that the current Ysgol Bro Ogwr building will be opened as another English medium school. In order to support the Cymraeg 2050: A million Welsh speakers strategy, the Welsh Government has set a target for Bridgend County Borough Council to increase the percentage of learners taught through the medium of Welsh from around 8% to between 14% and 18% by 2032 (based on Year 1 learner PLASC data from 2019-2020). There are no details in this consultation document that set the impact on the above targets in the context of this plan and the forthcoming plan for the existing Ysgol Bro Ogwr site.

16. There is a link to view the WESP for further details but there is no analysis in the body of this consultation to show how the planned mitigation for this scheme.

17. The Bridgend County Welsh Medium Education Forum has not had the opportunity to state its position on this plan during its formulation. This is disappointing as the forum has a wide range of expertise that could have advised the officers on the potential impacts to be included in this consultation.

A number of counties across Wales now include feedback from Welsh Medium Education forum members in any planning work. When proposals for significant developments in local schools occur, which could have an impact on Welsh medium education, input from the Welsh Medium Education Forum can be valuable particularly to ensure the resilience of any plan in terms of the Welsh language. Having the opportunity to give feedback on this plan in order to include a strong element of assisting with the promotion of Welsh medium education in the area, would have been beneficial during the planning process rather than at the end.

18. Section 3.4 of the Welsh Government School Organisation Code states:

***Welsh in Education Strategic Plan***

- *The extent to which the proposal would support the targets in the approved Welsh in Education Strategic Plan.*
- *How the proposal would expand or reduce Welsh language provision and in the case of the latter, set out why provision will be reduced.*

There is no information to meet the requirements of the second bullet point stated in the code.

The code also notes the following:

Where any school involved or affected provides teaching through the medium of Welsh the following information **must** be included in the consultation document:

- an assessment of the impact of proposal on the Welsh language (a Welsh language impact assessment must be included either in the main part of the consultation document or as an Annex); and

- an explanation of how the proposal forms part of the WESP

<https://llyw.cymru/sites/default/files/publications/2018-10/cod-trefniadaeth-ysgolion-feriwn-diwygiedig.pdf>

Section 3.4

page 34 Welsh Government School Organisation Code.

- The code is clear that the impact on the Welsh language **must** be assessed. All schools in Wales now teach through the medium of Welsh to some extent, even in our English schools. The Welsh schools in the area are also an integral part of this consultation and therefore I would have expected to see a comprehensive impact assessment as part of this consultation's documentation.
- Local Authorities are required to firstly measure the impact themselves and show those potential impacts and then propose ways to mitigate them as part of the consultation from the outset.

19. Note the 7 commendable principles to be adopted as a framework for school organisation in Bridgend. We would have expected to see the county's vision to grow Welsh medium education provision reflected within the principles by now.

Note:

- i. Commitment to high standards and excellence in provision.
- ii. Equality of opportunity, so that all pupils can access quality learning opportunities, regardless of which school they attend.
- iii. Inclusive schools, which cater for the learning needs of all their pupils.
- iv. Community focussed schools, where the school actively engages with its local community.
- v. Value for money.

20. We do not want to deprive any learner of 21<sup>st</sup> Century education provision, but it is important that fair consideration is made of all new plans so that solid mitigating measures can be ensured if a risk emerges.

21. The paragraph below on page 5 is of significant concern to us. At the outset it notes that there is no impact on Welsh speaking groups.

- Firstly, we would like to know what the county's definition of a Welsh-speaking group is.
- Secondly, the end of the paragraph acknowledges that extending the provision will likely attract parents who live closer to this school. This proves that the county is fully aware of the risk of extending this provision but not bold enough to implement significant mitigation measures to overcome these challenges. Does the county bear in mind that by increasing the capacity of English schools and not increasing the capacity of Welsh Schools, the

percentage for outcome 2 will drop??

“The policy is not likely to have any particular effect on any specific Welsh groups. Generally, places at Coety Primary School are currently oversubscribed. Therefore, with the increase in the number of places available for pupils in the school's catchment area, it is not unreasonable to assume that parents who are considering a Welsh medium education for their child in one of the local authority's Welsh primary schools ( the nearest is 1.7 miles away), as an alternative choice to Coety Primary School, will see the creation of additional places in the school as an opportunity to consider educating their child closer to home in an English medium school.

Therefore, there is a risk that the proposal could cause parents not to consider a Welsh medium education in the future.”

22. As Welsh schools still do not have official catchment areas in the county, a detailed study of the impact on Ysgol Bro Ogwr should have been conducted for this consultation in order to demonstrate, firstly, that you have followed the school organisation code correctly by referring to the impact that the additional places would have on the Council's ability to reach its target in outcome 2 of the county's Welsh in Education Strategic Plan 2022-2032, and secondly to offer solutions to address those risks.

23. So, what are the risks and possible mitigation measures?

- We would propose that an additional risk should be noted on page 18 “the reduction in the number of applications for Ysgol Gymraeg Bro Ogwr which in turn will also affect the numbers at Ysgol Gyfun Llangynwyd”. The mitigation measures for this risk would need to be clearly stated.
- Identifying the county's other plans to develop Welsh Medium Education in the body of the report would have been beneficial in addition to a thorough study of the impact on the Welsh language.
- Also, the proposal has failed to recognise the potential impact on numbers transferring to Ysgol Gyfun Llangynwyd from this specific area, and therefore neglects the responsibility to strengthen the targets of outcome 4 of the Welsh in Education Strategic Plan.
- Including information about a late immersion plan would also have been useful as part of the consultation to show that there is another alternative route for families also.
- What promotional work has looked at sharing information about Welsh medium education in this area? What is the county's communication policy on promoting Welsh medium education?

The above are only initial ideas and I would have been certain that the members of the Welsh Medium Education Forum would have been able to propose further



ideas and constructive comments to feedback on the initial consultation documents.

We are asking the county to thoroughly consider the impacts that they themselves recognise are likely to occur as a result of this plan and to respond proactively as soon as possible.

We therefore disagree with the proposals to extend the school as it is, as there is no full and transparent study of all of the impacts on the Welsh language and specifically on Ysgol Gymraeg Bro Ogwr, Ysgol Gyfun Llangynwyd and on the Welsh Language in Education Strategy in general.

We would like to see an impact study and a comprehensive promotion plan as soon as possible to ensure that this plan will not have a detrimental effect on Welsh medium education in the area.

As usual, we will be prepared to discuss our response with Bridgend County Borough Council officers and councillors at any convenient time.

### **Local Authority Response:**

Thank you for your response to the consultation to expand Coety Primary School.

Bridgend County Borough Council are committed to working in partnership with all stakeholders, including RhAG, to ensure that the proposal to expand Coety Primary school does not compromise our commitment to Welsh-medium education.

The local authority's vision to grow Welsh-medium education provision is well documented in the Welsh in Education Strategic Plan (WESP) 2022-2032 which has been approved by Welsh Government. A link to the WESP was included in the consultation document.

There is a duty on the local authority to support Welsh Government's long-term goal of having one million Welsh speakers by 2050 and the education system plays a key part in achieving this vision.

In July 2019, Cabinet and Corporate Management Board determined to proceed with taking forward a 'do maximum' education option for the Bridgend northeast area in Band B of the School Modernisation Programme (that is, a new build 2.5-form-entry Welsh-medium primary school to replace the existing Ysgol Gymraeg Bro Ogwr (YG Bro Ogwr) and to remodel the existing YG Bro Ogwr building to create a 1 or 1.5FE primary school to serve the area).

The WESP came into force with effect from January 2023. The plan details the local authority's approach to delivering the targets set under Outcome 2 (that is, more reception class children/five-year olds receive their education through the medium of

Welsh). The replacement YG Bro Ogwr forms part of the Outcome 2 strategy to increase Welsh-medium provision within the county borough.

The purpose of expanding Coety Primary School is to address capacity issues and it is important that the local authority respects parental preference in their choice of school for their child/ren.

As outlined in the consultation document, Coety Primary School is enthusiastic in its promotion of Welsh language and culture. It is the responsibility of Welsh-medium schools to make themselves as attractive to parents as possible to encourage them to decide to request Welsh-medium school places instead of English.

The Welsh in Education Forum (WEF) has a sub-group that's dedicated to promoting, marketing and celebrating the Welsh-medium offer within the local authority. Actions include promoting Welsh-medium schools and removing barriers to Welsh-medium education which aligns to Cymraeg 2050.

The local authority is unable to generalise on the reasons why families chose an English-medium or a Welsh-medium education, as the law requires the local authority to respect parental choice and not to promote or influence one choice of school over another, regardless of language medium. The local authority's strong school transport offer supports pupils in this area accessing the nearest suitable Welsh-medium school.

The local authority is not aware of learners that 'have to go to Welsh medium education because they didn't get a place in English schools'. Historically, the local authority has conducted a study to review the numbers of children who leave Welsh-medium primary schools (between Year 2 and Year 6) to go to English-medium schools, with a view to assist the Welsh-medium schools to retain their numbers, recognising that if children move to English-medium they are unlikely to return to Welsh-medium schools and considering the impact this has on the secondary provision.

The local authority's data shows that all classes in Ysgol Gymraeg Bro Ogwr in the 2021/2022 school year were less than 30 pupils, other than one class that had 30 pupils.

The School Organisation Code, 2018 (Code) clearly sets out each step in the consultation process together with the statutory consultees. The Welsh in Education Forum (WEF) unfortunately is not one of the prescribed consultees per the Code. However, anybody is of course welcome to respond to the consultation. The local authority is exploring ways in which the WEF can be consulted on future consultations.

You mention section 3.4 of the Welsh Government School Organisation, the local authority has to respect parental choice of education for their child/ren and recognising that the Welsh-medium schools have a responsibility to offer a competitive and attractive alternative to English-medium education. The proposal to expand Coety Primary School will assist with the provision of Welsh language by

offering good quality Welsh provision in its teaching, helping to promote the language and culture.

We note your suggestion for a seventh commendable principles to be adopted as a framework for school organisation in Bridgend. The commitments listed apply equally to all schools, not just Welsh-medium education.

Bridgend Council does not have a definition of a Welsh-speaking group. The local authority has liaised with other authorities, who have also confirmed they do not have a definition of a Welsh-speaking group.

There is no relationship between the capacity of a school and catchment areas. Catchment areas merely form part of the oversubscription criteria for the local authority's School Admission Policy. Nevertheless, the local authority is considering the appropriateness of catchment areas as part of its work to support Outcome 1 within the WEF and the delivery of the WESP (this work is ongoing).

A Welsh Language Impact Assessment has been prepared to support consideration of the impact of the proposal on the local authority's ability to support the growth of the Welsh language.

The WEF sub-group for Outcomes 3, 4 and 5 have targets and actions to monitor transition rates in to Ysgol Gyfun Gymraeg Llangynwyd and to increase the number of learners remaining in Post-16 education.

Should this proposal proceed, options for late immersion will be explored.

The local authority is committed to promoting, marketing and celebrating Welsh-medium education and the opportunities to speak Welsh within the community.

## APPENDIX 8

### (Snap Online Survey) Responses

#### Are you (please tick):

Parent/guardian (26) 58%  
Other interested party (please specify) (13) 29%  
School governor (5) 11%  
School pupil (1) 2%  
School staff (-)

#### Do you support the proposal:

No (25) 56%  
Yes (20) 44%

#### If you do not support the proposal, please state why.

I support the urgent need for the school capacity to be increased. However, the proposal to simply add 4 classrooms to the back of the school is preposterous. There is limited yard space currently and a report by ROSPA says the space per pupil is currently too small. To reduce this further whilst increasing capacity is not safe and I will take this to judicial review if a better solution isn't provided. I've shown officers options to extend and provide alternative play space. The new curriculum makes this requirement necessary. The well-being and future generations act makes it a legal requirement to place the well-being of the children at the forefront of the plans. In addition, the current hall is too small and already lunchtimes span 1.5 hours. To increase capacity without a larger hall would mean lunch would need to start at 11 and finish at 2. This is wholly unacceptable for 3-11 year olds to either have to have lunch so early or wait till almost home time for food. A proper extension needs to happen that gives the children what they deserve. A 21st century school should have adequate outdoor space. I've campaigned for the extension for years and support an extension but absolutely not at a cost to the children!

I do not support the proposal. Due to lack of space for playing children in the yard.

No consideration given to Welsh medium provision.

I do not believe that the proposed school extension works with the amount of yard space for the children. The proposed extension cuts into the already far too small yard area for years 5 + 6. You will then add more children on top of this and they will have nowhere to play at all. When you compare Coety Primary to other local schools such as Litchard and Broadlands, the outside space is absolutely woeful already. This cannot be reduced further, I'm sure there must be a minimum space that each child should have to play safely. The school hall is also too small now and so with extra children added it will no longer be fit for purpose. This is also true for the current staff room which will need to be extended. Please consider the footprint of the current facilities before trying to add further children to the school or they will be absolutely unfit for purpose and both the children and the staff will suffer.

Extra traffic on the estate alongside with the disruption to my children's education whilst building work is undertaken.

The Council should focus on expanding Welsh education in the area. Expanding English education like this would be at the expense of the Welsh in Education Plan and the Council and Government's aim to increase the percentage of pupils in the county receiving their education in Welsh.

The amount of traffic morning and late afternoon is concerning. The amount of cars parking in a very hazardous manners, will eventually cause either an accident to persons or other vehicles. Cars belonging to parents are increasingly encroaching further and further from the immediate area surrounding the school, to side streets adjacent to the school. I personally are having to delay my leaving home in the mornings to avoid the congestion and queues.

There are plenty of schools in Bridgend

Traffic around the school is crazy at the start and end of school time. Parents park on double yellows, no traffic wardens and general chaos as residents also park on the road, because they do not use their drives. A bigger school will only make this situation worse and will result in an accident. No one adheres to the 20 mph speed limit either.

Although I recognise the need for increased numbers of pupils spaces at Coety primary to support the local community, there is inadequate outside learning and recreational space to support the wellbeing and development of current pupils and so have concerns about the impact of increased pupil numbers and building space

The consultation document does not adequately explain where exactly on the school site the extension will go. I am very concerned that the playground, which is already very small, will be made smaller again. The paper says about an extended playground but gives no indication as to where this could go - to my knowledge there isn't any extra land that could be used for this purpose. I think it's incredibly important for children of all year groups to have space to run around at every break and lunchtime. I would like to see further information about the actual new building and extended playground.

What about outside space. School site was never big enough to accommodate extensions which would be inevitable due to the number of new houses being built.

It is not clear how the space taken up by new classrooms will be made available elsewhere. Communal parts of the building will be under more strain. My son is very worried about the increase in noise due to increased pupil numbers.

In the proposal it suggests the extension be placed on the playground and a new playground be made. I am unsure how this will happen or even where this will be placed. Outdoors is paramount to children's well-being. Also what concerns me would be the lunch times etc. They stagger the lunches there now, how will this work? Children being staggered until 2? This is not acceptable at all for children to

eat so late. How will they split the classes? Take children away from their already settled classrooms and friends? This will be a huge detriment to my own children's well-being. I think things need to be carefully thought through for the children.

It will be built on the junior playground taking up the netball court therefore denying the present pupils access to these facilities. I understand that the current school hall will then be too small requiring the pupils to have a staggered lunch up until 2pm which is a long time for a child under 11 to go as some might not get a decent breakfast to keep them going.

The current site is not fit for purpose so extending without using additional land is irresponsible and unacceptable.

Expanding English medium school would go against the Welsh Government's aspiration to increase the percentage of Welsh speakers in Wales.

The proposal would remove a playground for the children and would also mean that the lunch time is spread out over a far too long a period for the children

The plans are not appropriate and will severely impact and restrict the children's play area space, which is vital for their well-being during school hours. The play space is already stretched to capacity. The proposal will severely impact the space the children have to play in, and the timescale and structure of the proposed work will be detrimental to the children's learning and experience during this time. The proposal does not take into account the still grossly limited space to allow school lunch provision for the numbers proposed. It is ridiculous that to cater for this number of children, lunch schedules will need to begin at 11 am for some classes, finishing at 2pm. The plans have been poorly thought out with a lack of consideration for the pupils and parents that attend the school. This is not the answer!, the council would be better to rethink a more appropriate plan that is suitable and well constructed to ensure no rash action is taken, once again that will let down the children and the community who they represent.

Will be too big and cause disruption to existing pupils while building work takes place, parking will also get worse and no breakfast available for the current pupils, school hall for lunch etc will be too small for an increase in children

The school is already very large. It has insufficient parking in the surrounding streets and it sounds as if BCBC is intending on building a 'super primary school' which will negate the community feel of the current school which is already very large. In my opinion some of the smaller schools in the surrounding areas could be adapted to accommodate a small increase of pupils per school.

I support the expansion of Coety Primary school but this proposal is deeply flawed.

Facilities not large enough to support extra pupils. Lunch and break times over crowded

The community council perspective is that we support an expansion but it has to be the right size to accommodate all children in the Coety catchment. We feel a three

form entry school is required rather than 2.5 and that the hall needs to be bigger as well as the yard space a

We are concerned about the future quantity of learners receiving their education through the medium of Welsh. Increasing this English school's capacity would mean that more parents can choose English education and thus going against what is noted in the county's WESP document. As the only secondary Welsh school in the county

**If you would like to suggest any changes or alternatives to the proposals presented, please give details:**

Attach the school site to the 4g pitch and put a netball court next to it so that theres enough space for the children. Extend the hall to the side of the building to be able to serve children dinner! Particularly given that soon there will be free school meals! Look at options for additional staff room space. Theres plenty of surrounding land next to the school thats soon to be passed on to bcbc by persimmon.

Attach the school to a bigger playing area . Expand the dining hall and do the right thing first. Instead of creating another problem with lack of playing space out doors, and not having enough space for the children to have dinner at a reasonable time.

The initial build for the school has proved to be inadequate resulting in children who should be going locally to school have to travel elsewhere. The proposal to extend the school is welcomed BUT the option of just adding a block at the rear of the school is not the right option in my opinion. Current play space for the children is already inadequate as detailed in a previous RoSPA Report, taking play space away from the children to build the extension is a retrograde action and must not be allowed to take place. NAEYC accreditation criteria require a minimum of 75 square feet of play space outdoors per child, currently I believe that requirement is not met so taking more play space away for a new building will make things worse. Alternatives MUST be considered for the safety and learning opportunities for children at Coety Primary Increasing the school roll to meet demand is all well and good but this will impact upon other facilities that the children will use, not just classroom space. For example, the school hall is used for meal times, the additional number planned will extend the timescales of lunch periods to ensure numbers are handled safely and in a timely fashion. The onset of free meals for all in the coming year or so will also add to this challenge meaning extended meal times to meet the needs of the children.

There is land in the yards that could be flattened and landscaped to create much more yard space. Its currently set out as bankings and grass areas which are unusable play space in anything other than bone dry weather. This could be used in a much more effective way if it was all flattened and given an all weather play surface. There is also a purpose built 4G pitch which is unable to be accessed by the school. If a covered path could be created from the school down to the 4G to enable the children to play there safely in break times, this would alleviate the lack of space. There is a large balcony area off the staff room that could be used to extend this area. The is space next to the downstairs lunch room which could be used to extend this area.

Consideration needs to be given to parking around the school and pick up and drop off times. The yellow zigzags by the school are unnecessary and has made the parking much worse. Most parents are working so are unable to walk due to time constraints.

Path added to rear of school running along side the fields. When gate is closed at rear we either have to walk around Ffordd y Draen or down a muddy dangerous path.

Only requirement would be to provide an adequate and safe drop off zone for parents.

I fear a 2.5form system could negatively impact pupil experience and outcome, I therefore would urge to look into a 3.0form entry alternative to the proposal if suitable land is available.

Change the school to Welsh medium or bilingual.

The school is that small to service an ever growing community with parc derwen increasing and more families one to the area

If anything I don't feel the plans are large enough! There are issues with families struggling to get siblings into the school and people who live nearby unable to get children into the school, capacity increasing by circa 100 doesn't feel like it's enough of an increase, especially when even more homes are being built in the local area

Parking for parents using their vehicles to commute their children to school must be considered.

Change the boundaries. Build another school

Whilst this proposal does go some way to address the demand for the school which is welcomed, when looking at the surrounding houses in Coity and Parc Derwen and the demand for the school based on it being the closest to many houses here I actually do not believe this proposal goes far enough and this is not a longer term future proof proposal and this will still be a problem for many years to come. It would be my proposal to fully extend the school to a 3 class school rather than the proposed 2.5. This could be achieved with the space available even if it were to be a 3 story school or/and extended outwards, or an additional school built on some of the field to allow for a split junior and infants school. This would be what is right for our community and children for the present and future.

I worry that the proposed changes are not large enough to accommodate the children on the estate and surrounding area.

I am happy for the school to be bigger.

Build a school in a less dangerous built up area. Being at the top of the estate where the houses seem to be more closely grouped together seems crazy, when there are



more suitable areas on the estate or even a raft of empty commercial lots at Brackla industrial estate.

I need more details about the new building (exact location, proposed building materials etc), and the exact location of the “extended playground” as well as what surface the playground would have.

Build on front elevation of the school. Move nursery to a separate site.

N/a

The extension will be fantastic as there is currently not enough places for the amount of children living on parc derwen I know lots haven't been able to get in. Will the hall be increased in size to accommodate the extra children at lunch times. The proposed extension is to be located on the playground. This is taken away vital outdoor play area for the children. Will additional playground be added to make up for the playground that will be taken?

The current school hall and playground would not be large enough to accommodate additional pupils. School lunches would need to be extended by an unacceptable period of time. Young children cannot be expected to wait for lunch until a time near school closure. The BCBC proposal on playground includes unusable areas which would be a safety hazard if used.

The focus should be on expanding Welsh-medium schools to ensure that there are more pupils in the County learning through Welsh.

Look at building up creating another floor to the school or placing the class rooms in another location just at the car park

The extension needs to not compromise play areas and the council needs to fundamentally address the restrictive size of the school hall and corresponding lunch schedule, to ensure that the capacity allows a sensible lunch schedule. Lunch 11-2pm is not acceptable. Can the green space in front of the school be utilised for the extension. I.e. nursery years located together in extension built on green space, resulting in no restrictions to play area space and yards. The school hall will need to be adequately extended to support the extra children, to allow lunch 12-2pm and to facilitate full school assemblies that are vital for cohesion throughout the school key stages.

Get on with building the new welsh school and the old welsh school can become another primary school which has already been proposed

I suggest a small increase in capacity to the surrounding schools such as lichard, coychurch etc. The school already feels very large for a primary school and parking is not up to scratch for the school as it is. The surrounding streets would need to be heavily modified as i believe it is an accident waiting to happen, with cars abandoned all over the place at school times and little to no traffic controls in place or police/pcso presence.

The yard need to be bigger and linked to the artificial pitch. The hall needs to be bigger to accommodate all children. The staff room need to be bigger. By BCBC's own figures within this consultation the expanded school will be too small before the extension is completed. It must be a three form entry. The design is poor.

As previous point

Cease from increasing the capacity so that it doesn't affect the quantity attending Welsh education.

**Do you feel the proposal will have a positive or adverse impact on the Welsh language and how? Please consider, in particular, opportunities for persons to use the Welsh language and treating the Welsh language no less favourably than the English language.**

Welsh language is currently being favoured above English as portacabins are going up in ysgol bro ogwr even though there was a surplus of nursery places. Coety had over 20 in catchment children turned away but won't be given portacabins! Childrens welfare is being ignored due to a desire to hit Welsh language targets.

This is an English language school . There are plans for a large welsh school with in the area. This school is impacting local children and parents. And was built too small in the first place .

Adverse effect.

The proposal will have a neutral impact on the use and teaching of the Welsh language at Coety Primary School

Positive

No comment

If anything it would have a positive effect. More children means more diversity, and more children learning the language together

No

I don't see how this would have an effect unless a Welsh speaking teacher is appointed to support the increase in the school size.

Positive only as school already actively encourages Welsh within the school.

I understand that statistically this is likely to reduce welsh language as by nature of the school being oversubscribed parents are forced to move their children to a welsh medium school. This therefore is a negative feedback in the current system by lack of choice. Improving the welsh medium school or providing an additional welsh medium school in the catchment would be a more suitable way of maintaining welsh language preference. As a parent we didnt choose to have a welsh medium school,

even as a back up option during application, as we felt the local english schools were more suitable for our child.

No affect

No

No

Positive – the children will be taught Welsh

Positive

Yes this does treat the Welsh language unfavourably. It does make us as a community think that Welsh Medium education is not important.

No, the children in school learn Welsh and will continue to do so. The need for this area is to make Coety school bigger regardless of language.

It will be positive as it will be incorporated into the child's learning

N/A

N/a

None, all pupils learn Welsh, this does not depend on the school.

The school are good at using Welsh in daily school life.

Don't think this is relevant

No impact

NA

Adverse effect on Welsh Language.

No

The proposal impacts learning and wellbeing of pupils and will have a detrimental effect on aspects of learning, including Welsh and Welsh based topics. The Welsh language resources are already very stretched and will be further stretched with inadequate resources with the plans and additional children. Will the council be allocating additional and new budget to allow the expansion of Welsh speaking staff and supporting resources.

I went to a Welsh speaking primary and comprehensive and I have chosen to send my children to an English speaking primary, they will learn Welsh there but not at the expense of the English language, can't make parents send their children to the Welsh medium just because it's the only option.

Neither positive or negative.

This will have no impact on the Welsh language . In the last 7 1/2 years I understand only one child declined a place at Coety has opted for welsh language education.

No comment

As noted previously, it will have an adverse effect on Welsh education, at a time when the county is eager to increase its Welsh medium provision. What is the result of the survey into the effect on the Welsh language by increasing the English capacity? How can you be sure that the quantity choosing Welsh education won't drop?

**If you believe that the proposal will have an adverse effect on the opportunity of people to use the Welsh language, or that the Welsh language is treated no less favourably than the English language, please identify any changes that can be made to the proposal to reduce this impact.**

This proposal will have an effect if the kids don't have a big enough yard and can't have dinner as the dinner hall is to small . If the extension goes ahead with out thinking of increasing the dinner hall size.

Extend the Welsh medium provision in the county. There are only 4 English primary schools our of a total of 44.

Not applicable

No comment

N/A

Utilise some BCBC funding to improve the welsh medium schools to the point they are so superior to the english medium schools that a parent would have to take their child there instead.

Not effect

The proposal will go against the Council and the Welsh Government's aspiration to see an increase in the percentage of pupils receiving Welsh education.

N/A

Build bilingual schools as opposed to one language schools in this area.The Council have no idea how to do this and what is best gor Childrens future

Na

N/a

None

N/A

NA

Not applicable

No

Budget allocation to allow classes to be appropriately structured to optimise Welsh learning resources, and to invest in welsh speaking head count

N/a see above.

No comment

As noted previously, more English medium places will be available closer to the parent's homes and therefor it will be easier for some to reach the English school rather than the Welsh one. Until there is equality in the quantity of Welsh and English schools, and the same resources and travelling distance is available, increasing the English capacity will always effect the growth of the Welsh language.

**How do you think the proposal could be changed to impact more positively on the opportunity of people to use the Welsh language or that the Welsh language is treated no less favourably than the English language? Any other comments:**

Increase the primary Welsh medium places available across the county.

Not applicable

No comment

As above

N/A

Na

Change the school to a Welsh or bilingual school.

No thoughts

None

Build more bilingual schools

None

N/a

None

N/A

Not relevant

NA

Not relevant

No

The council needs to allocate sufficient and additional budgets to allow the school to increase its welsh speaking staff headcount

This is about Coety primary. I fully support the provision of Welsh language education and the expansion of Ysgol Bro Ogwr. Those who choose to educate their children in English should not suffer discrimination.

No comment

Ensure there is the same quantity of Welsh and English schools, so that the same resources and travelling distance is available. I know the county has pledged to increase the percentage of children receiving their education through the medium of Welsh. Increasing the Welsh and English places at the same time won't enable the county to fulfil the pledge in a legal document.

**Any other comments:**

Please put the children first and extend the school properly!

Hopefully some one will have sense!

I strongly disagree with the extension proposal until the plans to extend the play areas, lunch room and staff room are confirmed.

Parking needs to be a priority

No

Na

I think the proposal is the only suitable solution

Please consider given comments

As mentioned, i support this but the proposal does not go far enough to actually meet community needs and expectations, further extension beyond a 2.5 class school is needed.

The main reason I believe this should be approved is so that children who live on the estate can attend their local school. It should absolutely not be the case whereby children in the catchment area for another school attend Coety to the detriment of children that are within catchment for the school. I have neighbours who live on Parc Derwen less than a ten minute walk from the school (in catchment) but cannot send their children to the school. My little girl is 4 months old and is already making connections with other babies on the estate who will be in the same school year as her and it would be a great shame if she was not able to attend the same school as her new friends due to initial poor planning when building a school that is too small for the area and community it serves. Increasing the size of Coety will not have an adverse effect on Welsh language provision as the strong likelihood is that parents who are unsuccessful in gaining a space at Coety will apply for a space in Litchard, Coychurch, Tremaine etc rather than a Welsh Medium school. Parents should be able to send their child to the local English medium school and should not be penalised for choosing to do so.

I am glad the school is being made bigger as the amount of families who have to drive their children out of the estate is too much. We bought our house with the intention our daughter would go to Coity primary.

None

The children's facilities cannot be decrease due to an extension

The School needs to be extended possibly over 4G pitch or other land adjoining the school. School was built with no consideration to allowing over 1500 new properties as opposed to the original planning application for far fewer houses. The residents in Coity Village are being denied places at the current Coety School and this problem needs to be sorted.

2.5 year groups doesnt work for the kids or the teachers.

I provided a full and frank assessment of my views during the recent consultation session with Coity Higher community council. This proposal is deeply flawed and cannot proceed as is.

We fully accept and support the document Councillor Amanda Williams has submitted in relation to this consultation.

In my opinion, this proposal is unprincipled and it will have an effect on the quantity of children receiving Welsh education in this area.

**How would these proposals affect you because of your: Gender, Age, Ethnicity, Disability, Sexuality, Religion / belief, Gender identity, Relationship status, Pregnancy, Preferred language?**

No at all

They will not affect me for any of the reasons stated above

B/A

I think the improved access available by a larger modern school would make it more accessible to all

Nil at present

They would not affect me

They wouldn't

They hinder the future of Children in the area

They would not affect any elements of diversity but would better family and community left to have a school big enough for the area and would promote more walking

My preferred language is English and I feel that not increasing the size of Coety would be pushing me to send my daughter to the new Welsh primary school that i

They would impact negatively on neurodivergent people or those with sensory processing differences by increasing the size of the school environment.

NA

N/A

The proposal threatens my language and culture.

### **Local authority responses/clarifications to summary issues raised:**

#### **Growth of Welsh-medium education**

The Council's School Modernisation Programme reflects the Council's commitments in the Welsh in Education Plan, which aims to ensure that demand for Welsh-medium education can be met in the long-term and in line with Welsh Government's Cymraeg 2050 strategy and contributing to its target of one million Welsh speakers by 2050.

Coety Primary School's catchment area has been subject to major housing developments (that is, Parc Derwen and the Taylor Wimpey and Persimmon sites at Brackla northeast).

This proposal is part of a wider strategy to increase pupil places to serve the Bridgend northeast area which has been subject to this significant development. The Council has adopted a phased approach to expanding primary provision, as



follows:

- Welsh-medium capacity being addressed as part of Band B of the School Modernisation Programme with Cabinet approval having been received to relocate Ysgol Gymraeg Bro Ogwr (that is, a Welsh-medium primary school that serves Bridgend town, Valleys Gateway and Pencoed areas) to a new site, which is located near the existing school site.
- Proposed enlargement of Coety Primary School to a 2.5 form entry school to increase provision.
- It is proposed to create additional primary pupil places at the residual Ysgol Gymraeg Bro Ogwr site which, with the enlargement of Ysgol Gymraeg Bro Ogwr and the proposal in respect of Coety Primary School, would ensure the demand for pupil places for the area would be met.

An education options appraisal has been undertaken in relation to the residual Ysgol Gymraeg Bro Ogwr site and the outcome will be reported in due course.

The outcome will necessitate a catchment area review. Preliminary high-level options have been considered. However, these options will be informed by the outcome of the education option appraisal. Therefore, any proposed changes can only be progressed in line with a decision regarding the education options for the residual YG Bro Ogwr site. The views stakeholders would be sought in respect of any proposed changes.

The above strategy addresses the longer-term demand for pupil places in the Bridgend northeast area of the county. There are plans to increase Welsh-medium provision in the south-east and the Bridgend town areas.

### **School size / capacity / future expansion**

The current pupil admission number (PAN) is 60 and with the addition of a four-classroom extension, the PAN will increase to 75, meaning an additional 15 places in each year group. The existing capacity of 420 places would increase to 525 for 4 to 11-year-olds (that is, 2.5 form-entry). There are currently 72 full-time-equivalent nursery places at the school and as a result of the development and through mixing year groups, there will also be an opportunity to increase nursery provision by an additional 12 full-time nursery places. This means that the nursery will have 75 full-time places, with 9 full-time-equivalent part-time places, providing a total of 84 full-time-equivalent nursery places.

There is an increasing need for additional capacity at Coety Primary School. The option of a 2.5 form-entry school was deemed the preferred option for the size of the school site. A set of options, costs and strategy was established to maximise the capacity of the school to serve the area. The school site is not large enough to facilitate a 3 form-entry school and the site will be at full-capacity if the four-classroom extension receives approval. The structure of Coety Primary School would not be able to support a third floor.

At this stage of the project, site layout and general internal arrangement drawings have been produced to demonstrate site fit, that is to demonstrate that a four-classroom extension is achievable within the space available. If approval is received to proceed with the scheme, the design and development stage will involve further stakeholder engagement and consultation sessions to ensure that the extension achieves the needs and requirements of the school and pupils.

### **Move the nursery to a separate site**

This proposal seeks to improve the position for those children who currently are unable to transition from nursery into reception. Coety Primary School has good quality nursery provision and this needs to be located on the same site as the school, supporting transition from early years into mainstream education. By locating the nursery on an alternative site, the school would become a split-site school, and this could prove challenging for some parents in terms of drop-off/pick-up arrangements and leadership and management in terms of operating two sites.

### **Nursery years located together in an extension built on the green space at the front of the school**

During the consultation period, site layout plans were provided purely to demonstrate site fit. During design development, the local authority would work with the school to determine an agreed location for the extension.

### **Smaller schools in the surrounding areas could be adapted to accommodate a slight increase of pupils per school, such as Litchard Primary School, Coychurch Primary School**

This option was discounted from a previous option appraisal to increase capacity in the area, as the residual YG Bro Ogwr school would be used to increase the number of pupil places.

### **Classroom extension location and building materials**

The proposed four-classroom extension will be attached to the eastern side of the existing school building and the additional yard space will be to the east of the extension. The materials used to build the extension will match the existing building as far as practicable. The new extension will meet the requirements of the Bridgend 2030 Decarbonisation Strategy and will be designed using Net Zero Carbon principles.

### **Royal Society for the Prevention of Accidents (RoSPA) report**

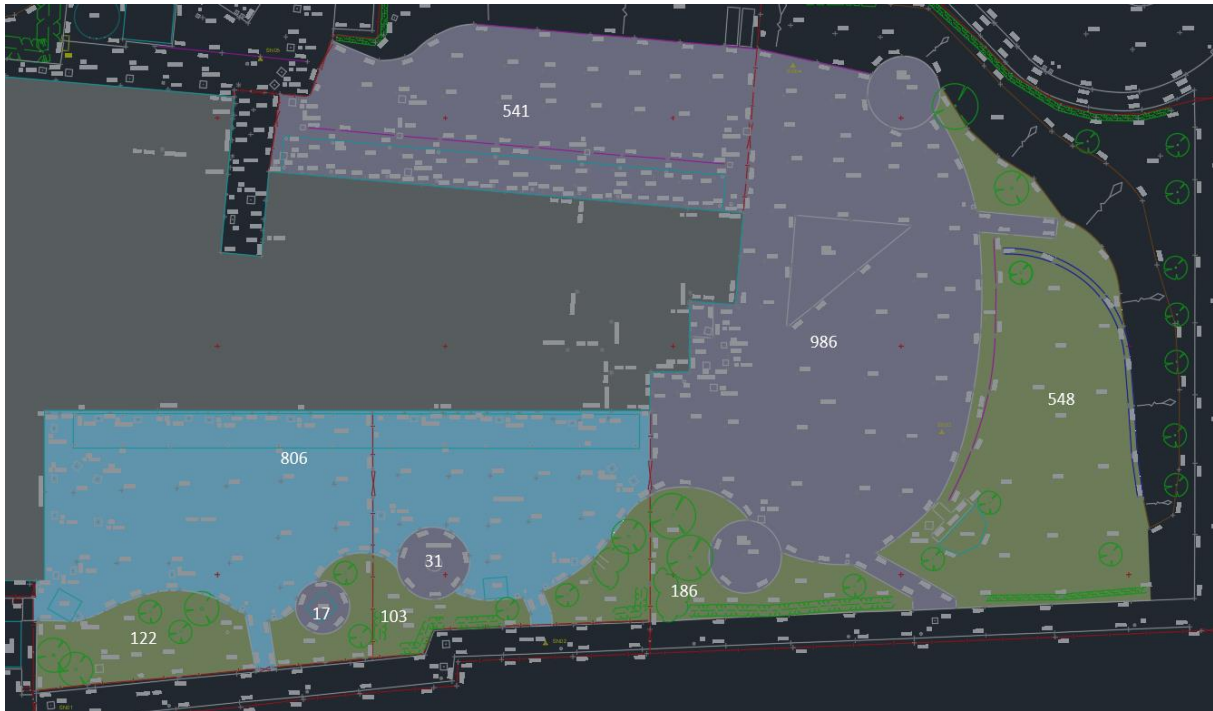
A review of external spaces at Coety Primary School has been undertaken. There is a contradiction of the measurements taken by the local authority and those that were included in the RoSPA report. The previous measurement studies are incorrect. There is more information available now compared to what was available to all parties at the time of the report. The RoSPA report concluded that the area

measurements are in accordance with the Building Bulletin Guidelines.

The actual area measurements are as follows:

- Nursery and reception - rubber crumb surface: 806m<sup>2</sup>
- Nursery and reception - hard surface: 48m<sup>2</sup>
- Foundation Phase - yard: 541m<sup>2</sup>
- Key stage 2 - yard: 986m<sup>2</sup>

Accessible grassed spaces are in addition to the areas listed.



These confirmed areas exceed the previous local authority measurements. The RoSPA report is incorrect.

### **School Yard**

The proposal seeks to increase the yard space by between 550m<sup>2</sup> and 570m<sup>2</sup>. The net area of additional yard (by removing the footprint of the extension) would be a minimum of 360m<sup>2</sup>. This equates to 3m<sup>2</sup> per pupil. Additional space can be created, if there is a further need, by extending the yard further. This would require a small retaining wall of approximately 600mm.

Games court markings for netball, basketball and football will be provided on the yard. The court will not have any fences or barriers. The court will not have any fences or barriers.

As a result of the consultation process the local authority will explore options for a secure access point to the 4G pitch, to allow pupils a safe route to additional play space. Officers will work with the school to ensure the yard space is sufficient and

will be consulting formally with staff in the future regarding design requirements, if approval for this scheme is received from Cabinet.

### **Construction phase**

The construction work is planned to begin in February 2024 and the new classrooms would be open in January 2025.

The project team will work closely with the headteacher, governors and staff by planning the programme around the needs of the school to limit disruption during the construction phase.

Should the scheme progress, the school will remain open during the work. Careful consideration needs to be given to where the contractor is based and how they will access the working area. There will be time restrictions in place to limit contractor movements and deliveries during the school day.

### **Hall and kitchen space**

The existing hall and studio is within the area guidelines parameters for a 2.5 form entry school. Extending the hall will not resolve the situation of reducing the lunch service time, as pupils cannot all be served their meal at the kitchen hatch at the same time. There is a need for a continuous lunch time service. This will allow pupils to have their lunch on a rota system and potentially with an extended lunchtime when Universal Primary Free School Meals (UPFSM) is rolled out. The school will need a longer lunch period for the kitchen to cope with the additional UPFSM. Catering Services has indicated that there is potential to improve the meal service by providing an additional free-standing servery.

Continuous lunch service would be required with tables/seats being rotated as pupils leave the hall instead of sittings. The kitchen can batch cook foods throughout a continuous service to ensure the food is at optimal nutrition and quality. In addition, continuous service and rotation of pupils will speed up the service time.

The school hall and seating will be sufficient to accommodate the additional pupils during lunch. Lunch-time service will be continuous, instead of staggered and will begin at 11:30am onwards. Continuous service will ensure all pupils are served on time.

The introduction of UPFSM is not limited to Coety Primary School but will have an impact on other primary schools in the county borough.

The school will undertake a risk assessment as and when UPFSM is rolled out should the lunchtime need to be extended and to determine if additional lunchtime staff are required.

### **Staffroom**

Officers will align the size of the staffroom to meet the increase in staff numbers, in-line with Building Bulletin 99.

## **Traffic concerns**

If approval is received to progress this scheme, a full transport impact assessment (TIA) will be undertaken. A TIA will identify what measures will be taken to deal with the anticipated transport impacts of the scheme relating to all forms of travel. The TIA will be considered by the local authority's Highways Department and they will ensure that any improvements suggested are taken forward as part of the planning application process.

## **School drop-off area**

There is no proposal to allow parents to use the drop-off area. Where there are no physical parking restrictions in place on the road, such as yellow lines, the police are the only enforcement agency who can address hazardous, or obstructive parking and to enforce the speed limit.

The local authority's Parking Services undertake visits to the area and they can take action against illegally parked vehicles. The local authority cannot dictate to residents that they must use their driveways instead of using the road to park their vehicles.

School drop-off and pick-up times is a matter for the governing body of the school.

## **Active Travel**

National Planning Policy now dictates that priority must be given to active travel and public transport above other forms of transport including car use. As a result of this, it is suggested that all schools and colleges assess their travel needs and develop a school travel plan. The school will continue to engage with pupils, staff and visitors to develop a robust school travel plan to promote sustainable ways to travel to and from school, by promoting walking, cycling, public transport and car sharing. The local authority will explore the option to implement a "school street" (that is, a road outside a school with a part-time restriction on vehicles outside schools during drop-off and pick-up times), with the Highways and Transportation Department, if approval for this scheme is received from Cabinet.

## **Resident Parking**

The introduction of resident parking would not prevent parents from driving along Ffordd Yr Hebog and dropping-off their children on the existing parking restrictions. It could, result in parents dropping children off in the running lane (between parked cars if the existing restrictions are removed) making Ffordd Yr Hebog an informal drop-off point on the highway. Any residents parking scheme would be dependent on the completion of existing zones which have been identified in the county borough and a scheme would require a feasibility study due to the constraints of the location. It could essentially create a one-way system which can lead to increased vehicle speeds, which would be undesirable in a residential area and outside the school. Furthermore, residents can often be divided on which way the one-way system runs, as those on the furthest side of the one-way system will be disadvantaged with access to their properties depending upon which direction they approach the

location. Response times can sometimes be negatively affected. The police cannot sustain regular enforcement which would undoubtedly be needed to address the issue, which could lead to a Traffic Regulation Order (TRO) falling into disrepute. Finally, residents parking it is likely to receive objections from the residents due to the policy incurring a charge for each permit issued annually to cover the administration cost. It should be made known to residents that the existing policy recommends there are still limited waiting areas within the street, to permit tradespeople, deliveries and visitors to park, the resident permit scheme does restrict permits to bona fide residents only and this does not include visitors or family not resident at the address. Enforcement of the resident parking permits requires a foot patrol and as with approximately sixty schools and numerous other resident permit areas and identified high risk patrols and other obligatory duties the limited number of current Civil Enforcement officers cannot be at each and every location.

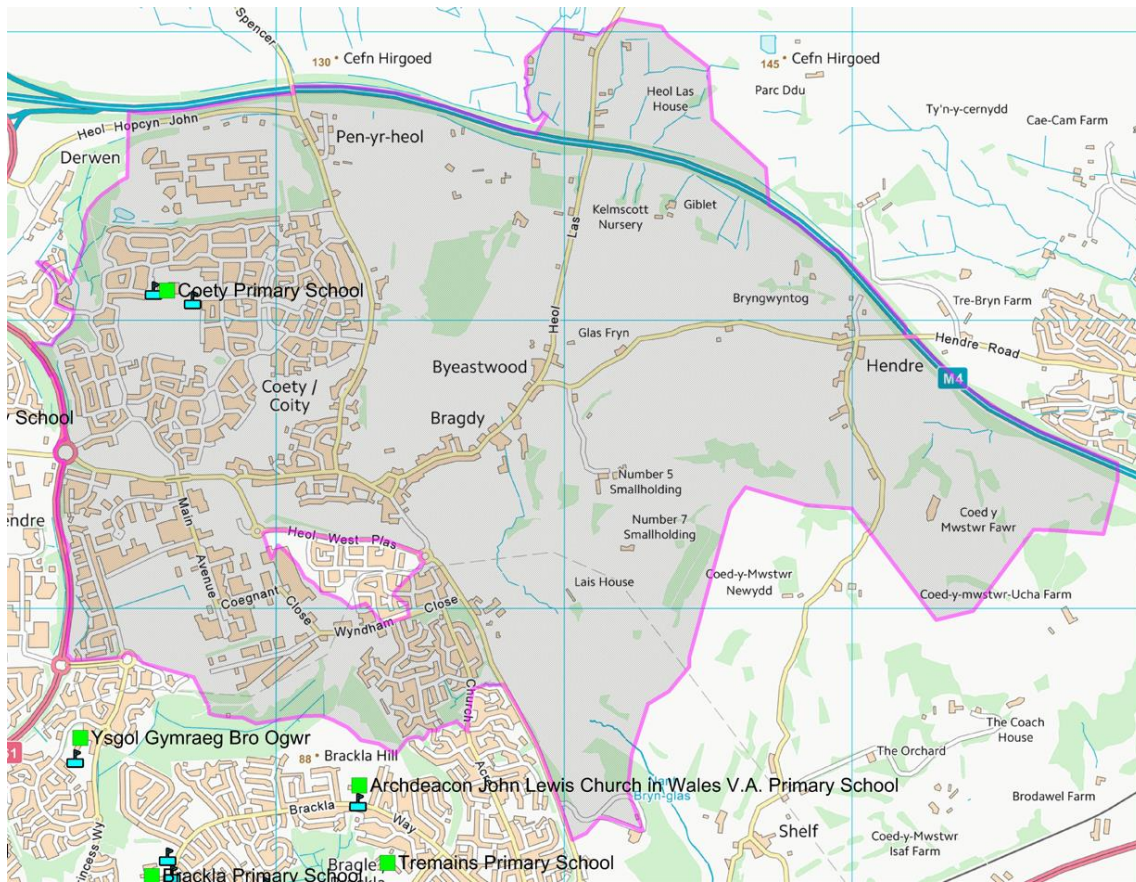
The existing parking restrictions have been implemented on the grounds of road safety. "School Keep Clear" lines are placed outside school premises to create a sterile area where pedestrians can have a clear view of traffic using the road and vice-versa. The red stripe painted on the road surface was requested by the previous head teacher in an attempt to highlight the fact that there are dropped kerbs present at that location and to try and prevent vehicles from obstructing them, at that time there were no "School Keep Clear" lines on the road surface. As soon as road safety became aware of this instruction / guidance, the school was contacted and asked to retract that statement as it was incorrect. "School Keep Clear" lines have now been painted on the road surface and the children were taught by Kerbcraft Road Safety Training, that a safer place to cross the road was at the dropped kerb with the "School Keep Clear" lines.

The Highways and Transportation Department is aware of outstanding lining works, however the timeframe to undertake the work are dependent on third parties.

### **Catchment area**

A review of the catchment area will be progressed, and if a change is required, then a separate consultation process will be undertaken. Nevertheless, just changing catchment boundaries does not create additional capacity it merely reallocates the existing pressure to adjacent schools, the majority of which are also oversubscribed and are facing similar pressures as Coety Primary School.

The catchment area for Coety Primary School is outlined in pink in the below map:



## APPENDIX 9

### Estyn's response

#### **Estyn response to the proposal to enlarge the premises at Coety Primary School, increasing the capacity at Coety Primary School with effect from January 2025.**

This report has been prepared by His Majesty's Inspectors of Education and Training in Wales.

Under the terms of the School Standards and Organisations (Wales) Act 2013 and its associated Code, proposers are required to send consultation documents to Estyn. However, Estyn is not a body which is required to act in accordance with the Code and the Act places no statutory requirements on Estyn in respect of school organisation matters. Therefore, as a body being consulted, Estyn will provide their opinion only on the overall merits of school organisation proposals.

Estyn has considered the educational aspects of the proposal and has produced the following response to the information provided by the proposer.

## **Introduction**

This consultation proposal is from Bridgend County Borough Council. The proposal is to enlarge the school site and increase the capacity of Coety Primary School from 420 full time school places to 525 as of January 2025 and providing an additional 12 full-time nursery places.

## **Summary/Conclusion**

We consider that the proposal is likely to, at least, maintain the standard of provision in the area.

## **Descriptions and benefits**

Bridgend County Borough Council has provided a useful rationale for the proposal. They outline the benefits of enlarging the premises to improve accommodation and increase the pupil admission number. The proposer gives appropriate attention to the school's building suitability, outlining the funding necessary to resolve condition issues in addition to information regarding funding the proposal to enlarge the school. The proposer gives appropriate attention to the school's current capacity. It considers the impact of the increase to the admission number on the expected future demand for school places in the area. The proposer also considers the effect on pupil numbers in other schools in the area and on transfer to secondary schools. The current building does not appear to be able to adequately meet the demand for school places at present.

The County Borough Council provide a clear description of the projected timetable for statutory procedures and for implementation of the proposals. The strengths and weaknesses in each of the options considered are suitably detailed. The proposer has set out the likely impact of the proposal. The proposal includes information on the impact on the local environment and in relation to safe walking routes. Generally, the proposal considers project risks appropriately.

The proposal considers a range of alternatives and provides a rationale for the preferred option. The proposal projects an increase in pupil numbers based on over-subscription, new housing and further planned new homes in the area. The proposer provides comprehensive information on the capacity of other schools in the area and indicates that the proposal is likely to have limited impact on them.

The Council has taken sufficient account of the impact of the proposals on Welsh medium provision under its own Welsh Education Strategic Plan. The proposal indicates that it may impact on Welsh medium schools. It clearly outlines the level of demand for Welsh language provision and includes details of approved plans for increased capacity at a Welsh medium school in the locality due to open at the beginning of the autumn term 2025.

The Council provides an estimate of the financial costs of the proposal. The proposal acknowledges further cost implications in relation to the potential for rising costs but does not provide mitigation in the event of budgetary pressures.



## **Educational aspects of the proposal**

In considering the impact of the proposal on learning; wellbeing and attitudes to learning; teaching and learning experiences; care support and guidance and leadership and management, the Council has referred to the most recent Estyn inspection outcomes. In its last inspection in March 2018 Coety Primary School was judged to be good in standards, wellbeing and attitudes to learning and care, support and guidance. It was judged to be adequate and in need of improvement in teaching and learning experiences and leadership and management. The proposal briefly suggests the ways in which it will enable the leadership team to shape the teaching and learning provision to support the delivery of the curriculum. It includes the local authority's current view on the quality of leadership and management.

Bridgend County Borough Council considers the impact of the proposal on wellbeing and care well. It makes a link between the new build and strengthening learning provision across the age range of the school. The proposer indicates that the proposal will improve accessibility in accordance with requirements under the Equality Act 2010.

An appropriate equality impact assessment has been carried out and found that there is no negative discriminatory impact anticipated on most groups. Positive impacts are identified in relation to disability and gender. The possible negative impact identified on admissions to Welsh medium education have been mitigated by the planned replacement and increased capacity of the local Welsh medium school due to open in the autumn term 2025.

The proposal identifies possible disruption to learners whilst building work is underway.

### **Local Authority response:**

Dear Estyn

Thank you for your detailed consideration of the consultation to enlarge Coety Primary School. It is encouraging to note that it is felt that the proposal has been well considered and that it is appropriate.

Yours sincerely

## **Appendix 10**

### **List of stakeholders**

- ▶ The Governing Body, parents, staff, carers, guardians and pupils of Coety Primary School
- ▶ Other schools within the cluster/area:  
Archdeacon John Lewis Church in Wales Primary School, Brackla Primary School, Coychurch Primary School, Croesty Primary School, Litchard Primary School, Pencoed Primary School, Penybont Primary School, Tremains Primary School, St Mary's Catholic Primary School, Ysgol Gymraeg Bro Ogwr, Archbishop McGrath Catholic High School, Brynteg School, Pencoed Comprehensive School, Ysgol Gyfun Gymraeg Llangynwyd
- ▶ Neighbouring authorities
- ▶ The Church in Wales and Roman Catholic Diocesan Authorities
- ▶ Welsh Ministers
- ▶ Welsh Government
- ▶ Constituency and Regional Assembly Members (AMs) and Members of Parliament (MPs) representing the area served by any school which is subject to the proposals
- ▶ Estyn
- ▶ Teaching and staff trade unions representing teachers and other staff at any school which is subject of the proposals
- ▶ Central South Consortium Joint Education Service
- ▶ South Wales Police and Crime Commissioner
- ▶ Town and Community Councils representing the area served by any school which is subject to the proposals:  
Brackla Community Council, Bridgend Town Council, Coity Higher Community Council, Coychurch Higher Community Council, Coychurch Lower Community Council, Newcastle Higher Community Council, Pencoed Town Council, Merthyr Mawr Community Council
- ▶ Independent or voluntary nursery providers serving the area
- ▶ BCBC Childcare team/Children and Young People's Partnership and/or Early Years Development and Childcare Partnerships where present
- ▶ Cabinet Members
- ▶ Corporate Management Board
- ▶ Ward Members

- ▶ BCBC Group Manager, Learner Support
- ▶ CAMHS, NHS Wales, Cwm Taff, Local Health Board.  
Primary Mental Health Team, NHS Wales, Cwm Taff, Local Health Board.
- ▶ Speech and Language Therapy Service, NHS Wales, Cwm Taff, Local Health Board.
- ▶ Paediatricians, NHS Wales, Cwm Taff, Local Health Board.
- ▶ Occupational Therapy (OT) NHS Wales, Cwm Taff, Local Health Board.
- ▶ Physiotherapy Service: NHS Wales, Cwm Taff, Local Health Board.
- ▶ Educational Psychologists. Educational Psychology Service, Bridgend County Borough Council.
- ▶ Social Services & Wellbeing Directorate, Bridgend County Borough Council
- ▶ SNAP Cymru
- ▶ Barnardo's Cymru
- ▶ Welsh Language Commissioner